

Service Manual



OKANOOGAN SINGLE SPIT ROTISSERIE

Rotisseries

Single Spit Rotisserie

OKANOOGAN WS-SSR

Wood Stone

WOOD STONE CORPORATION

1801 W. Bakerview Rd.
Bellingham, WA 98226 USA

Toll Free 800.988.8103

Tel 360.650.1111

Fax 360.650.1166

www.woodstone-corp.com

DOC NO **M0076.03** REVISED **APRIL 2019**



TABLE OF CONTENTS

Introduction 2
Introduction 3
Exploded Diagram 4
Parts List 5
Operation 6
Troubleshooting Guide 7
Wire Diagram 8
Limited Warranty 9



WOOD STONE SINGLE-SPIT ROTISSERIE SERVICE MANUAL

This manual is for use only by Trained and Qualified Service Personnel. It is recommended that this equipment be installed, maintained and serviced by qualified professionals.

WARNING: Improper installation, adjustment, alteration, service or maintenance can result in property damage, injury or death. Read the installation, operation and maintenance instructions thoroughly before installing or servicing this equipment.

SERVICE DEPARTMENT AND WARRANTY INFORMATION

If you have any questions please call the Wood Stone Service Dept. at 1.800.988.8103. Normal hours are 8 a.m.–4:30 p.m. PST Monday through Friday. After hours and on weekends call and follow the instructions to leave a message on the emergency service voice mail. A Wood Stone technician will be paged and return your call promptly.

You must contact Wood Stone before proceeding with any warranty service. We strongly encourage you to call whenever any service is performed. There are two reasons for this.

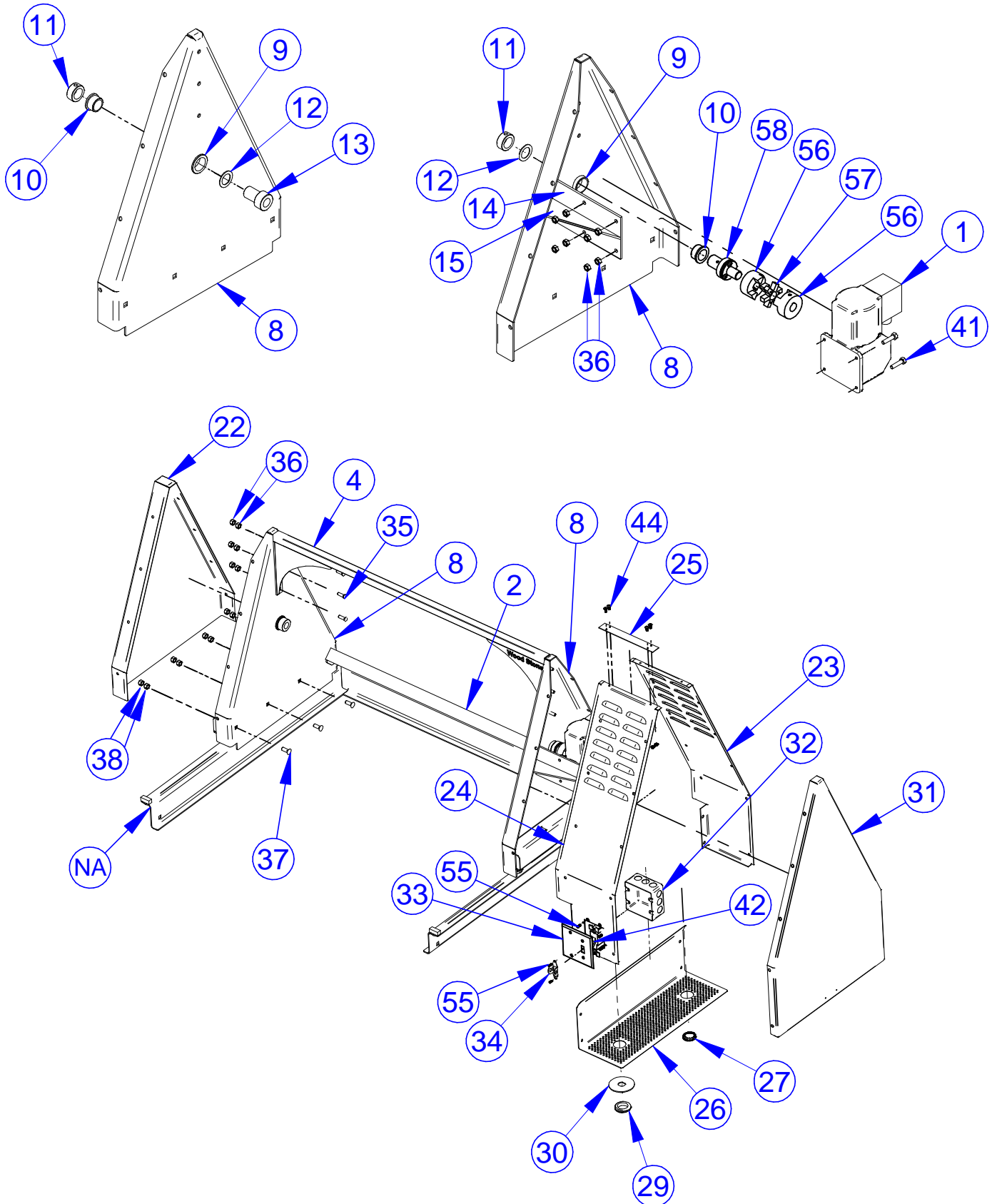
First, though we strive to design and build equipment that is simple and easy to service, we realize that our equipment is quite unique. We find we can often be of considerable help over the phone when a technician is troubleshooting an oven or rotisserie.

Second, we keep a record of all service that's been performed on each individual piece of equipment. This history can be useful for troubleshooting. Our goal is to help you service the equipment correctly and as efficiently as possible.

Parts are available through Wood Stone. Please contact the factory for pricing. Additional Service Manuals are also available. Installation and Operation Manuals may be downloaded from the Wood Stone web site at: www.woodstone-corp.com. See the complete Wood Stone Limited Warranty at the end of this manual.



Shown: SSR-45 Right-hand Model





#	Description	Part no.
1	Gear Motor 1/20 HP	70R00-0001
2	Lower Span, 1.5 x 1.5 x 0.25 Angle	6000-0070
4	1 x 1 x .065 Wall Square Tubing	6000-0130
8	End Cabinets - Inner Wall	1670870
	Part 8 includes welded on parts:	
9	Bushing	50R0-0003
14	Motor Mount Plate	1580853
15	Motor Mount Plate Rib	1580854
10	Rulon Bearing	50R0-0020
11	1" I.D. Locking Collar w/Set Screw	50R0-0024
12	Rulon Thrust Washer	50R0-0063
13	Idle End Wear Collar	50R00-0052
22	Idle End Cabinet, Outer Wall	1641892
23	Drive End Cabinet - Right Rear	1643851
24	Drive End Cabinet - Right Front	1643852
25	Drive End Cabinet - Wrap Connector	1642872
26	Drive End Cabinet - Bottom Cover	1530852
27	Button Plug 1-1/2"	7000-0603
29	Grommet, 1-1/4" ID High-Temp	70ROC-0011
30	Strain Relief Plate	1560852
31	Drive End Cabinet - Outer Wall	1643850
32	Switch Box 4" x 4" x 2-1/8"	70R0-0002
33	2-Gang 1-Toggle 1-Blank Device Combination Wallplate	70R0-0011
34	Handle Guard	70R0-0019
35	5/16"-18 x 1" Carriage Bolt	9000-0615
36	5/16"-18 Hex Nut (double nut)	9000-0600
37	3/8"-16 x 1" Carriage Bolt	9000-0478
38	3/8"-16 Hex Nut (double nut)	9000-0450-SS
41	Screw 5/16"-18 x 1-1/4" Hex	9000-0664
42	Motor Switch	70R0-0013
44	Screw, 10-32 x 1/2" PH Truss Head	9000-0122
55	Screw, 6-32 x 3/8" PH, Pan Head	9000-0011
56	L090 Coupler Body	7000-1823
57	L090 Spider	7000-1824
58	Drive End Hub	50R00-0056

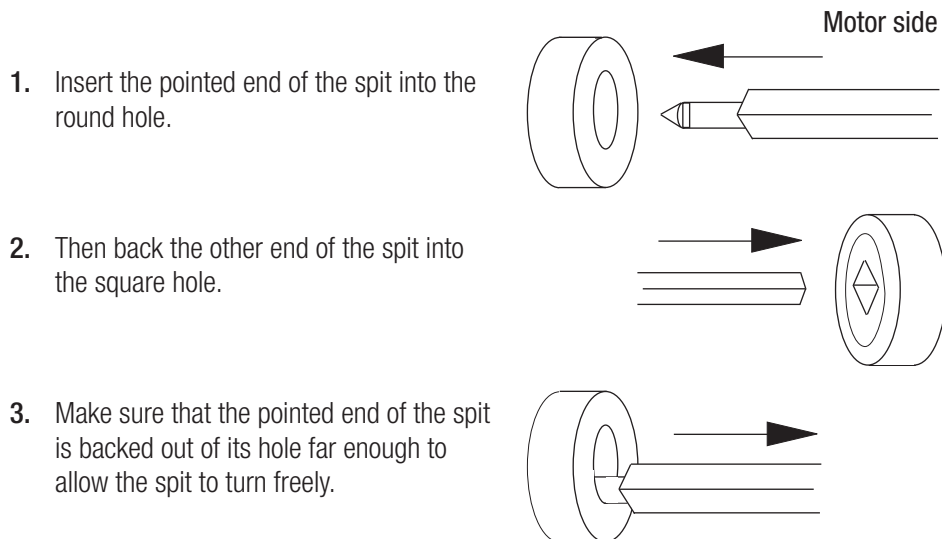


LOADING AND UNLOADING THE ROTISSERIE

- Always turn off the motor when loading or unloading the rotisserie.
- Pull the Okanogan toward the front of the grill to load and unload spits.
- Use hot pads or oven mittens when unloading a spit—it may be very hot.
- Once the spit is securely in place, push the rotisserie toward the back of the grill and turn the motor back on.

INSERTING THE SPITS

The spits can only be inserted into the rotisserie drive one way. When loading the rotisserie, make sure the load is evenly distributed by loading equally weighted spits and/or baskets opposite each other. The round end of the spit or basket is always inserted first. Push the round end of the spit into the hole until there is clearance to insert and seat the square end into its socket. Be sure to fully seat the spit so that it locks into place and the round end will rotate freely when the drum turns.

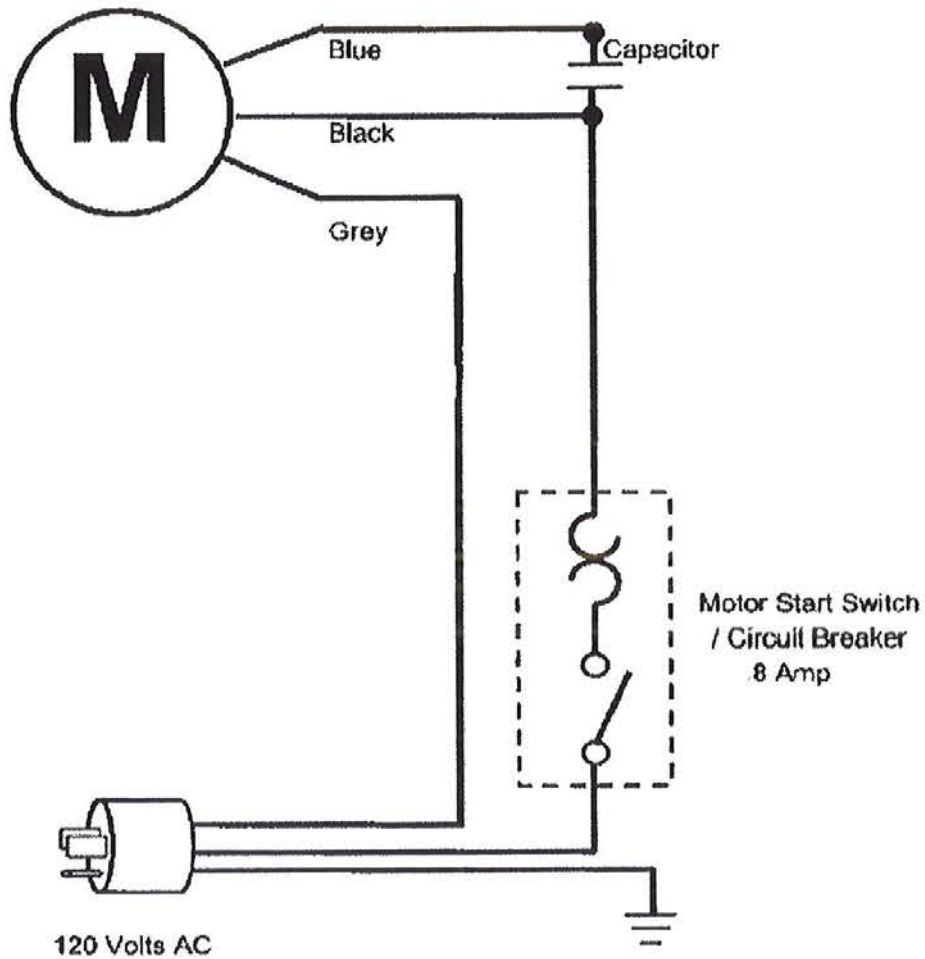




SYMPTOM	CAUSE / SOLUTION
Rotisserie does not turn on.	<ol style="list-style-type: none"> 1. Check that rotisserie is plugged in, and that power supplying outlet is on. Check that power cord is not damaged. 2. Breaker on ON/OFF switch is tripped. Press switch firmly to the off position to reset. 3. Loose wire in switch junction box or at motor. 4. Damaged wiring, inspect and check continuity of motor leads. 5. Bad motor capacitor. Capacitor is located in the switch junction box. 6. Bad motor. Check for open or shorted motor windings. If windings are good, recheck power and wiring.
Motor runs, but rotisserie does not turn when under load.	<p>Key on motor shaft has moved out of the keyway and dropped into the Lovejoy coupling. Remove the drive side cover. Remove the motor and retrieve the key from the coupling. Reinstall the key onto the shaft. At the very end of the shaft (tip), use a snap punch to create a divet at each side of the keyway. This will help retain the key on the shaft. Reinstall the motor. Make sure to retighten the set screw on the Lovejoy coupling.</p>



OKANOGAN SINGLE SPIT ROTISSERIE WIRING DIAGRAM



DIAG #: WD201 Rev. 0
DATE: 7/25/17 (as built)

Blank page

Blank page



ALL WARRANTY SERVICE MUST BE PRE-APPROVED BY WOOD STONE

Wood Stone warrants its equipment to the original purchaser against defects in material or manufacture for a period of one year from the original date of purchase, subject to the following exclusions and limitations.

Please contact the factory first at 1.800.988.8103 or 1.360.650.1111, seven days a week. Our normal business hours are 8am to 5pm Pacific Standard Time Monday–Friday. If calling during non-business hours, follow the recorded instructions for emergency service and a Wood Stone technician will get back to you promptly.

EXCLUSIONS

The warranties provided by Wood Stone do not apply in the following instances:

1. In the event that the equipment is improperly installed. Proper installation is the responsibility of the installer; proper installation procedures are prescribed by the Wood Stone Installation and Operation Manual.
2. In the event the equipment is improperly or inadequately maintained. Proper maintenance is the responsibility of the user; proper maintenance procedures are prescribed in the Wood Stone Installation and Operation Manual. Burner problems resulting from debris or ash in the burner well will not be covered by the warranty. Call with questions regarding maintenance frequency.
3. In the event that the failure or malfunction of the appliance or any part thereof is caused by abnormal or improper use or is otherwise not attributable to defect in material or manufacture.
4. In the event that the appliance, by whatever cause, has been materially altered from the condition in which it left the factory.
5. In the event that the rating plate has been removed, altered or obliterated.
6. On parts that would be normally worn or replaced under normal conditions.
7. Normal cracking due to expansion and contraction stress relief in the ceramic firebox.
8. In wood-fired equipment configurations, in the event that pressed log products of any type have been burned in the equipment.
9. In coal-fired oven configurations, in the event any type of coal other than anthracite coal fuel has been used.
10. Damage resulting from the use of chemical cleaning products in the oven, as well as any damage from liquids or chemicals, including water, being poured or sprayed into the oven.

If any oral statements have been made regarding this appliance, such statements do not constitute warranties and are not part of the contract of sale. This Limited Warranty constitutes the complete, final and exclusive statement with regard to warranties.

THIS LIMITED WARRANTY IS EXCLUSIVE AND IN LIEU OF ALL OTHER WARRANTIES WHETHER WRITTEN, ORAL OR IMPLIED, INCLUDING, BUT NOT LIMITED TO, ANY WARRANTY OF MERCHANTABILITY OR FITNESS FOR PARTICULAR PURPOSE OR WARRANTY AGAINST LATENT DEFECTS.

LIMITATIONS OF LIABILITY

In the event of warranty claim or otherwise, the sole obligation of Wood Stone shall be the repair and/or replacement, at the option of Wood Stone, of the appliance or component or part thereof. Such repair or replacement shall be at the expense of Wood Stone with the exception of travel over 100 miles or two hours, overtime, and holiday charges which shall be at the expense of the purchaser. Any repair or replacement under this warranty does not constitute an extension of the original warranty for any period of the appliance or for any component or part thereof. Parts to be replaced under this warranty will be repaired or replaced at the option of Wood Stone with new or functionally operative parts. The liability of Wood Stone on any claim of any kind, including claims based on warranty, expressed or implied, contract, negligence, strict liability or any other theories shall be solely and exclusively the repair or replacement of the product as stated herein, and such liability shall not include, and purchaser specifically renounces any rights to recover, special, incidental, consequential or other damages of any kind whatsoever, including, but not limited to, injuries to persons or damage to property, loss of profits or anticipated profits, or loss of use of the product.

TO SECURE WARRANTY SERVICE

If you claim a defect covered by this Limited Warranty, contact:

Wood Stone Corporation, Attn: Service Department, 1801 W. Bakerview Rd., Bellingham, WA 98226 USA
Phone 1.800.988.8103 or 1.360.650.1111



WOOD STONE CORPORATION
1801 W. Bakerview Rd.
Bellingham, WA 98226 USA

Toll Free 800.988.8103
Tel 360.650.1111
Fax 360.650.1166

www.woodstone-corp.com

An ongoing program of product improvement may
require us to change specifications without notice.