

Service Manual



ELECTRIC PLANCHA

Speciality Equipment

Electric Plancha Countertop and Drop-In Models

ELECTRIC PLANCHA (COUNTERTOP)

WS-PL-MTL-40-35-CT

ELECTRIC PLANCHA (DROP-IN)

WS-PL-MTL-(34-29, 29-34, 44-34)-DI

WoodStone

WOOD STONE CORPORATION

1801 W. Bakerview Rd.
Bellingham, WA 98226 USA

Toll Free 800.988.8103

Tel 360.650.1111

Fax 360.650.1166



TABLE OF CONTENTS

Cautions & Warnings	3
Overview	4
4035-CT Specifications	5
DI-Specifications	6
Venting & Clearances	7
Basic Operation	8
Use & Maintenance	9
Troubleshooting	10
Pot Calibration	11
Power Supply Replacement	13
Heat Box Conductivity Check	14
3429/2934-DI Drawings	
Control Box	16
Heat Box	18
4434-DI Drawings	
Control Box	20
Heat Box	22
4035-CT Drawings	
Control Box (BEFORE 1/1/17)	24
Control Box (AFTER 1/1/17)	26
Heat Box	28
Electrical Diagrams (4 Zone)	
4-Zone -CT 208/240 VAC 1 Phase (BEFORE 1/1/17)	30
Power Switching & Heating Element	
Graphic Display	33
4-Zone -CT 208/240 VAC 3 phase (BEFORE 1/1/17)	34
4-Zone -CT 208/240 VAC 1 phase (AFTER 1/1/17)	37
4-Zone -CT 208/240 VAC 3 Phase (AFTER 1/1/17)	40
Electrical Diagrams (2 Zone)	
2-Zone -DI or -CT Stone 208/240 VAC 1 Phase	43
2 Zone -DI 208 VAC 3 Phase	45
Limited Warranty	48



SERVICE MANUAL FOR WOOD STONE ELECTRIC PLANCHAS



WARNING: Please read the installation manual before you install the appliance. Failure to follow instructions may result in property damage, bodily injury or even death.

FOR YOUR SAFETY: Do not store gasoline or other flammable vapors and liquids in the vicinity of this or any other appliance.

It is recommended that this appliance be installed, maintained and serviced by authorized professionals.

WARNING: Improper installation, adjustment, alteration, service or maintenance can result in property damage, injury or death. Read the installation, operation and maintenance instructions thoroughly before installing or servicing this equipment.

AVERTISSEMENT: L'installation, le réglage, la modification, la réparation ou l'entretien incorrect de cet appareil peut causer des dommages matériels, de blessures ou la mort. Lire attentivement les instructions d'installation, de fonctionnement et d'entretien avant de procéder à son installation ou entretien.

WARNING: Depending on the model and voltage configuration, THERE MAY BE MORE THAN ONE INCOMING POWER SUPPLY TO THE PLANCHA. VERIFY THAT ALL INCOMING POWER IS TURNED OFF BEFORE REMOVING THE CONTROL PANEL OR ANY ACCESS PANELS. For your safety, countertop models with multiple power supply cords may be supplied with a latching interlock cover beneath the unit. When this cover is removed completely all incoming power is disconnected from the unit.

The Wood Stone Electric Plancha
has been tested and approved by Intertek Testing Services and
conforms to UL 197;
is certified to CSA 22.2 #109;
and to NSF/ANSI 4.



Intertek
ANSI/UL 197
CSA 22.2



Intertek
ANSI/NSF STD 4

**OVERVIEW**

The Wood Stone Plancha is a high temperature, high performance electric griddle. It is capable of reaching and holding temperatures up to 800 °F. It has a very fast heat-up time and recovery characteristics as well. To do all of this, the Plancha utilizes a sophisticated control system that is unique compared to other griddles currently on the market.

Heat for the Wood Stone Plancha is provided by a series of sheathed heating elements installed beneath the cook surface divided into multiple control zones. More than one heating element may be included in each zone.

Temperature for each zone is sensed by a thermocouple that is inserted into the underside of the cook surface.

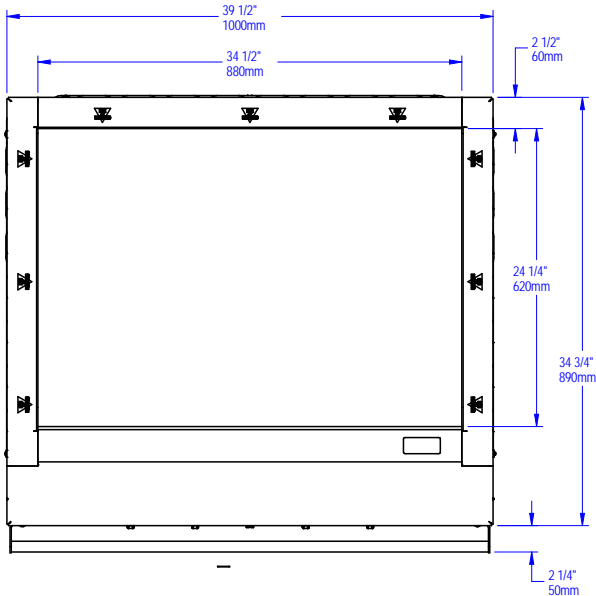
Control for the heating elements is provided by a control board inside the Plancha. This control monitors the temperature of each zone, and pulses the corresponding heating elements accordingly to maintain the temperature of the zone.

Power to the heating elements is switched by using relays. These relays take their control input from the control board.

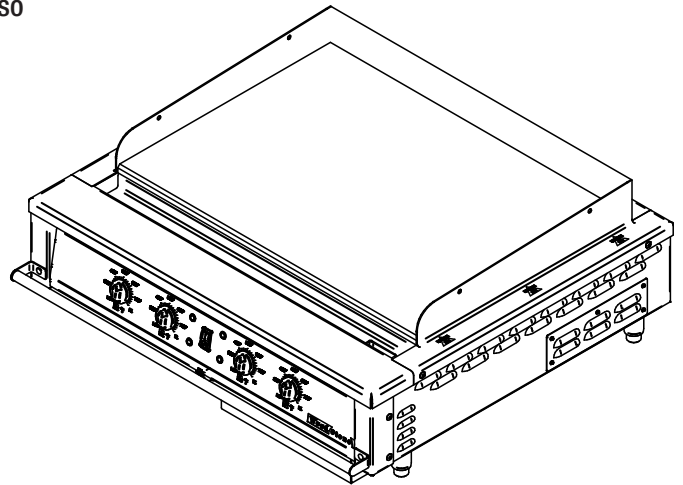


NOTE: 4-ZONE COUNTERTOP MODEL SHOWN

Plan

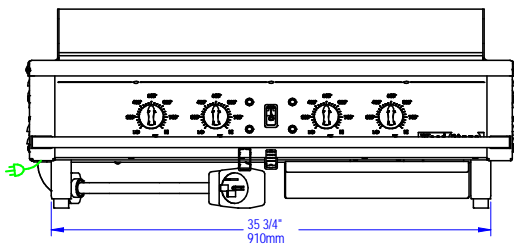


Iso

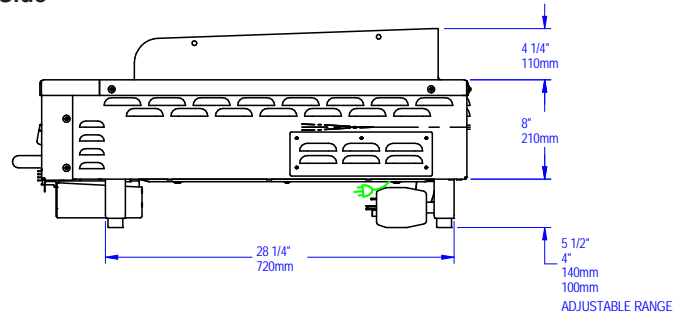


Unit Shipping Weight: 480 lbs.

Front



Side



COUNTERTOP MODELS - THREE ELECTRICAL CONFIGURATIONS OPTIONS

Voltage	208/240 VAC 3 phase	208 VAC 1 phase	208/240 VAC 1 phase
Watts	18.2 kW	13.3 kW	18.2 kW
Number of individual branch circuits	1	2	2
Rating of each individual branch circuit*	50 A	40 A	50 A

3 phase countertop models provided with **one** power cord equipped with a NEMA 15-50P plug

1 phase countertop models provided with **two** power cords each equipped with a NEMA 6-50P plug

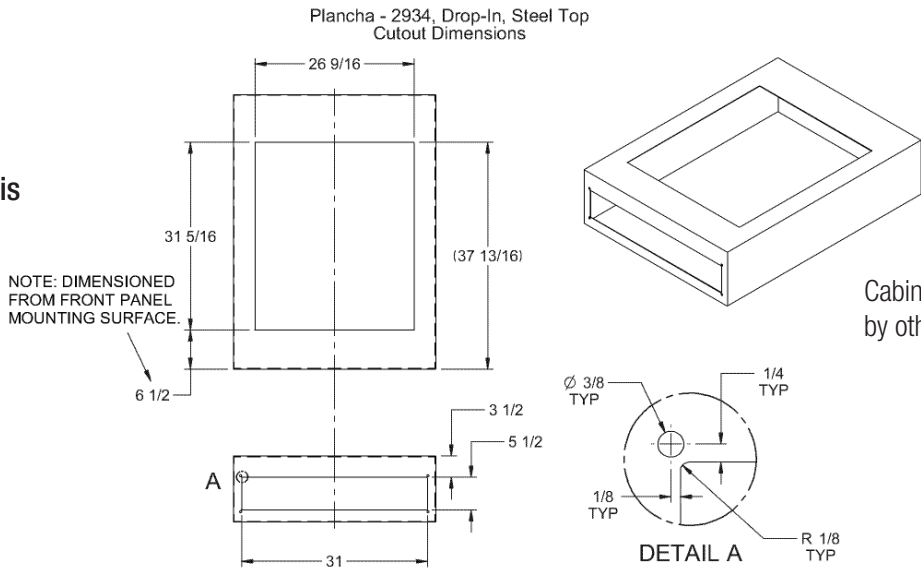
* Each individual branch circuit requires 2-wire plus ground

Note: Electrical configuration must be specified at time of order. Verify voltage and phase on the appliance data plate before installing.



TWO ZONE DROP-IN MODELS

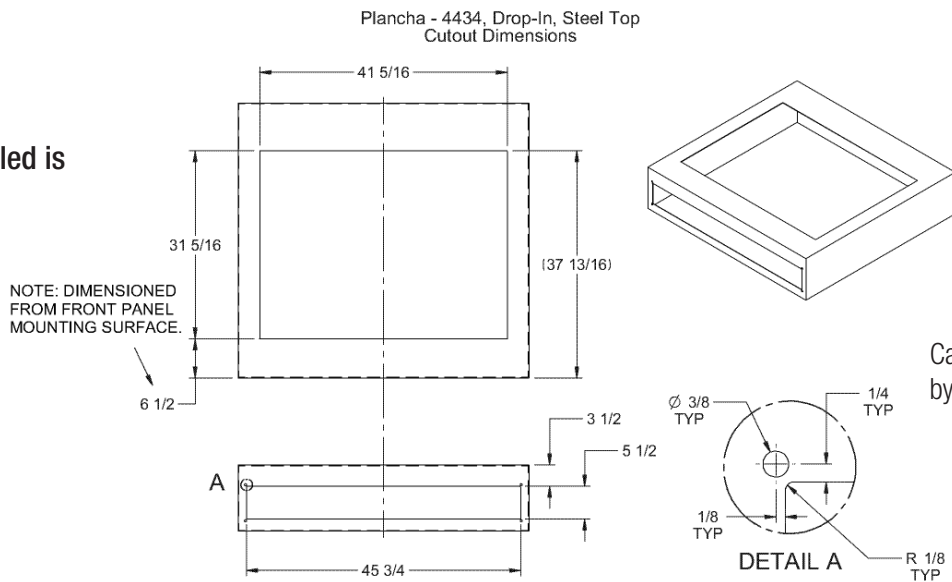
Weight installed is
180 lbs.



The cabinet/ countertop must be able to safely support this weight, plus the additional weight of all cookware, utensils, food, etc. that will be used with the Plancha.

FOUR ZONE DROP-IN MODELS

Weight installed is
280 lbs.



DROP-IN MODELS - ELECTRICAL CONFIGURATIONS OPTIONS

2-Zone Plancha	Voltage	208 VAC 3 phase	208 VAC 1 phase	240 VAC 1 phase
	Watts	8 kW	7.7 kW	10 kW
	Number of branch circuits	1	1	1
	Rating of each branch circuit	30 A	50 A	50 A
4-Zone Plancha	Voltage	208 VAC 3 phase	208 VAC 1 phase	240 VAC 1 phase
	Watts	18.2 kW	13.3 kW	18.2 kW
	Number of branch circuits	1	2	2
	Rating of each branch circuit	50 A	40 A	50 A

Drop-In models provided with 3/4" flexible conduit whip or whips.

3 phase Drop-In models provided with one conduit whip which requires an appropriately rated individual branch circuit.

1 phase Drop-In models provided with two conduit whips, each of which requires an appropriately rated individual branch circuit.

**VENTILATION**

The plancha must be vented with a Type 1 hood. This appliance must be installed and vented in accordance with NFPA 96 and all relevant national and local codes, subject to the approval of the local authority having jurisdiction.

CLEARANCES

If this grill is not properly installed a fire may result. To reduce the risk of fire, follow these installation instructions. A major cause of appliance related fires is failure to maintain required clearances (air spaces) to combustible materials. It is of utmost importance that this appliance be installed only in accordance with these instructions.

Any construction or materials must have a minimum of 12 inches of clearance to combustible construction from sides and back.

Allow a minimum of 3 inches of clearance to non-combustible construction to allow cooling air to enter the vents on the sides and back of the unit. Do not block the air vents on the sides, back or beneath the appliance.

WARNING: Do not pack required air spaces with insulation or other material.

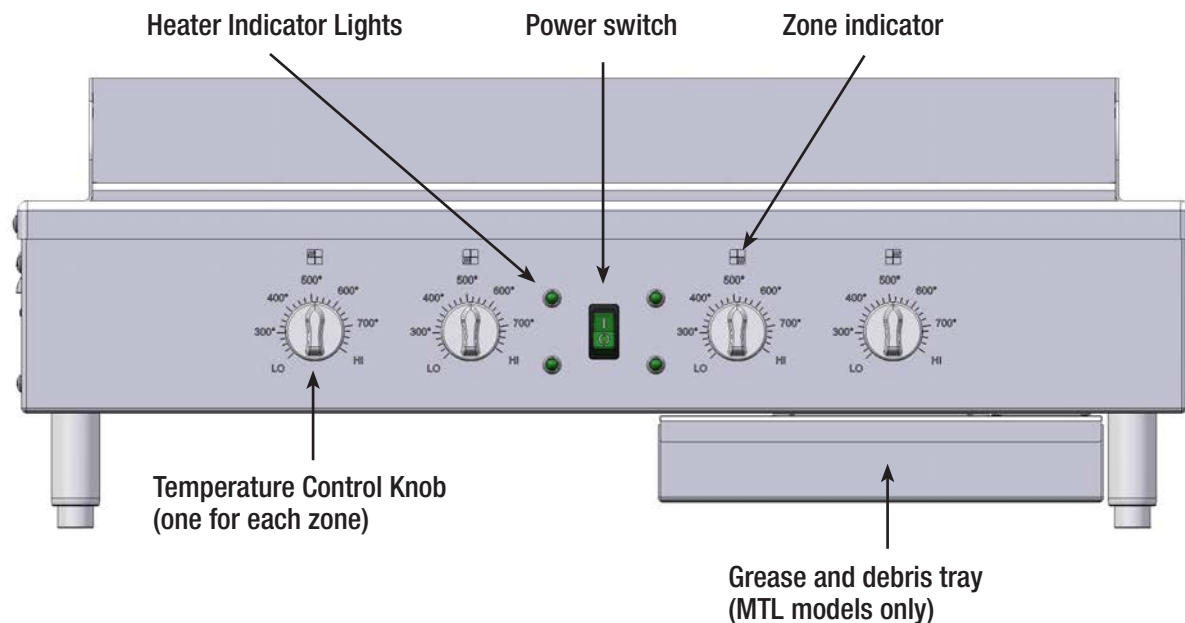
Electrical supply cords should be routed so that they are not subjected to the heat coming off of the plancha cooking surface. we recommend locating the electrical outlets at a height that is below the level of the Plancha cooking surface to avoid heat damage to the electrical cords.



BASIC OPERATION

Use the power switch to turn on the Plancha.

There are (4) temperature controls on the front of the control box. Use these to set the desired temperature for each zone. Zones are marked above the temperature control knobs. The Heater Indicator Light for each zone will be illuminated until the zone reaches the temperature set on the Temperature Control Knob or when the temperature drops below the temperature set on the Temperature Control Knob.



CLEAN THOROUGHLY BEFORE FIRST USE

A vegetable oil cooking spray is applied to the cook surface at the factory to help protect from corrosion during shipping. The cook surface must be thoroughly cleaned before use. Follow these instructions:

1. Set the temperature controls to 150 °F. Make sure the grease/debris tray is in place.
2. Turn the Plancha ON and allow to heat for 10 minutes. Then turn the Plancha OFF.
3. Using a small amount of water and a mild dish detergent, clean the cook surface with a wet towel. Then use a small amount of water (approximately 1 pint) to rinse. Wipe the surface down with a towel and the Plancha is ready for service.



DAILY USE AND MAINTENANCE

1. Check and empty the grease/debris tray frequently throughout the day. Keep the drain clear and do not allow the tray to overflow.
2. The cooking surface should be wiped periodically throughout the day using a damp towel and a small amount of water.
CAUTION: COOK SURFACE IS VERY HOT!
3. End of the day: The Plancha cook surface should be cleaned thoroughly at the end of each day. Wood Stone recommends the 3M 710 Scotch Brite Quick Clean Griddle Cleaning System for cleaning the Plancha cooking surface. This kit includes all of the necessary tools to clean the Plancha surface properly including Scotch Brite Quick Clean Griddle Liquid. These products are available through your dealer or restaurant supplier.

When using chemicals to clean the grill surface, first shut down the Plancha and allow it to cool for 30 minutes. If the Plancha is too hot, the chemical may tend to boil or burn off immediately and not work as effectively. Do not pour water onto a hot Plancha to cool it as this can warp the cook surface. **DO NOT USE EXCESSIVE AMOUNTS OF WATER TO CLEAN THE PLANCHA.** When cleaning, pour no more than 1 pint of water at a time onto the cook surface. Be careful when using scrapers on the cook surface to avoid scratching or gouging the top. Be aware that the cook surface is made of mild steel—it will not clean to a shiny silver-like surface. Do not use heavy duty degreasers or oven cleaners on the Plancha as these are not generally intended for use on hot surfaces.

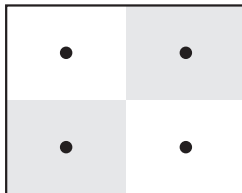
Damage caused by using spray hoses or excessive water, and scratching or marring of the cook surface, is not covered by the warranty.

4. The front, sides, and back may be wiped down with a cloth, and mild detergent if needed. Do not use abrasive cleaners or scouring pads as these will scratch the stainless steel.
5. Cooling vents on sides, back and underneath of the appliance. The Plancha grill is capable of extremely high temperatures, much higher than a conventional electric grill. To ensure the reliability of the electrical components cooling vents are provided on the appliance. These vents must not be blocked, and must be kept clean and free of grease and dust.



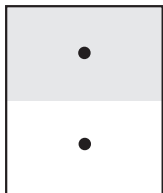
PROBLEM	POSSIBLE CAUSE/SOLUTION
Unit will not turn on	Verify that all electrical supply cords are plugged in securely. Check that circuit breaker(s) supplying power to the unit are not tripped.
On 4 zone models, only two zones are working	Verify that all electrical supply cords are plugged in securely.

4 zone

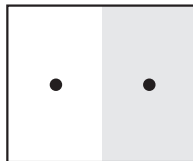


44x34

2 zone



29x34



34x29

SURFACE TEMPERATURE MEASUREMENT PROCEDURE

- 1. From a cold start:** Turn on the Plancha, set temperature on all knobs to 500 °F and wait at least 30 minutes before taking temperature measurements.
If Plancha is heated up / in use: Allow 30 minutes of inactivity to stabilize after last cooking run. Make certain grill surface is clean.
- Take two or four temperature measurements (depending upon whether you have a 2- or 4-zone model) using a surface probe. Note measurement once reading has stabilized. Measurement points are shown on the diagram at left—one at the center of each zone.
- Temperature reading at each point should be within the range 495–525 °F.

If you have checked the incoming power to the Plancha and it is still not functioning correctly, please unplug the electrical supply cords and contact the Wood Stone Service Department at 1-800-988-8103.

Our service hours are 8 am to 5 pm Pacific Time. Follow the recorded instructions for Emergency Service if you require assistance during non-business hours. A Wood Stone technician will promptly respond to your call.



POT CALIBRATION FOR THE A1 TEMPERATURE CONTROL BOARD ON THE ELECTRIC PLANCHA

It is only necessary to calibrate the pots if they have been replaced, or if the control board has been replaced or re-programmed. The dip switches on the board are also read and stored during the calibration sequence.

OPEN CONTROL ASSEMBLY

1. Power OFF. Disconnect power cord from wall. Remove Grease Pan.
2. If necessary, slide support structure under Plancha to hold Control Assembly in place after it is removed.
3. Remove retaining screws & carefully lower Control Assembly away from unit & rest on support structure (see *Photo 1 or 1a on next page.*)
4. **Optional:** Disconnect Ground Wire and Power Cables at left side of Panel (see *Photo 1 or 1a.*)
5. Tilt Control Panel forward to unscrew wing nuts and pull off Electrical Cover on models before 1/1/17. Set aside (see *Photo 2*).

REPLACE BOARD

The Thermocouple wires are zone specific (Z1, Z2, Z3, Z4) as marked on the circuit board. Label wires if disconnecting more than one at a time. Yellow is +, Red is – (see *Photo 4*).

6. Unplug wire harness from Temperature Control board (J1, J2, J3 and J5) and Power board (J1, J2) (see *Photo 3*). Fold back.
7. Remove 6 screws and lift Temperature Control board with thermocouples still attached.
8. Screw down new board. Swap each Thermocouple wire to new board.
9. Reconnect harness to Temperature Control board (J1, J2, J3 and J5) and Power board (J1, J2).
10. Inspect all connections are fully seated with no loose wires.
11. Verify DIP switch positions on the new board match previous board, otherwise call Wood Stone.
12. Reconnect Power Cables and Ground wire.

TEST (WITH UNIT OPEN)

13. Reconnect Power Plug to wall. Power Supply Board (D1) green LED should be lit.
14. On front panel, turn all Temperature Knobs to their LOWEST setting.
15. Power ON the main Power Switch on the front panel.
 - Verify that the Power Switch itself illuminates.
 - Verify two LEDs on the Temperature Control Board (D1 & D9) light (see *Photo 3*).
16. Power OFF.

POT CALIBRATION

These steps must be completed within ~60 seconds from first button push—before D9 stops blinking.

17. Verify, on front panel, all Temperature Knobs are at their LOWEST setting.
18. Find the white push-button on the Temp Control Board and the LED (D9) next to it.
19. Power ON. After 3 seconds, press and hold the white push-button until D9 blinks.
20. When D9 blinks, release the push-button & without delay turn all 4 Temperature Knobs to EXACTLY midway between the Highest & Lowest temperature settings—usually straight up.
21. Press the push-button again. D9 will stop blinking.
22. Power OFF.

Calibration Quick Reference

- 1 Power OFF
- 2 Knobs to minimum
- 3 Power ON
- 4 Press button until D9 blinks
- 5 Quickly: Knobs to midway point
- 6 Press button to stop blinking
- 7 Power OFF

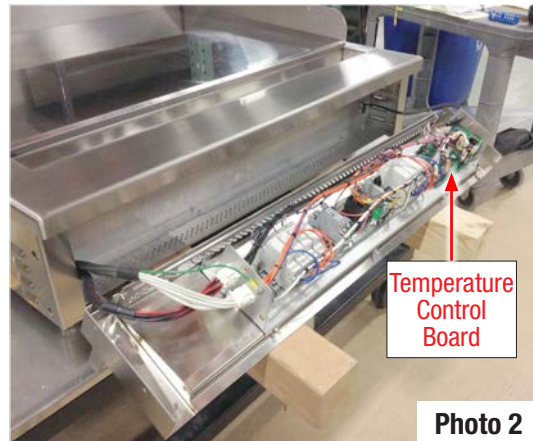
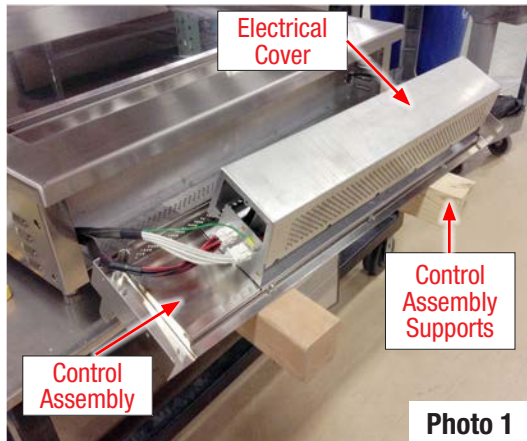
REASSEMBLE

23. Replace Electrical Cover.
24. Reconnect Control Assembly and Grease Pan.
25. After 40 minute warm up, use a temperature probe to verify surface temperature matches knob setting.

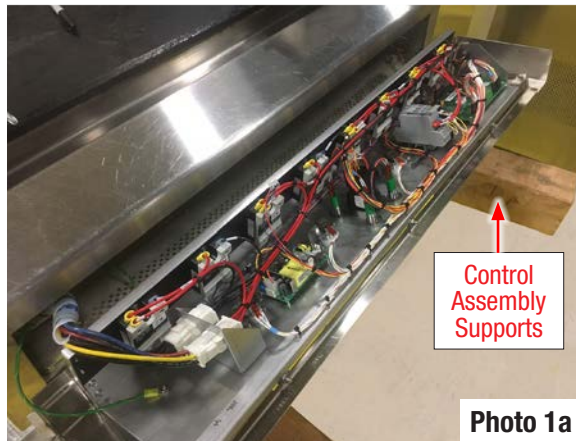
Photos on next page >



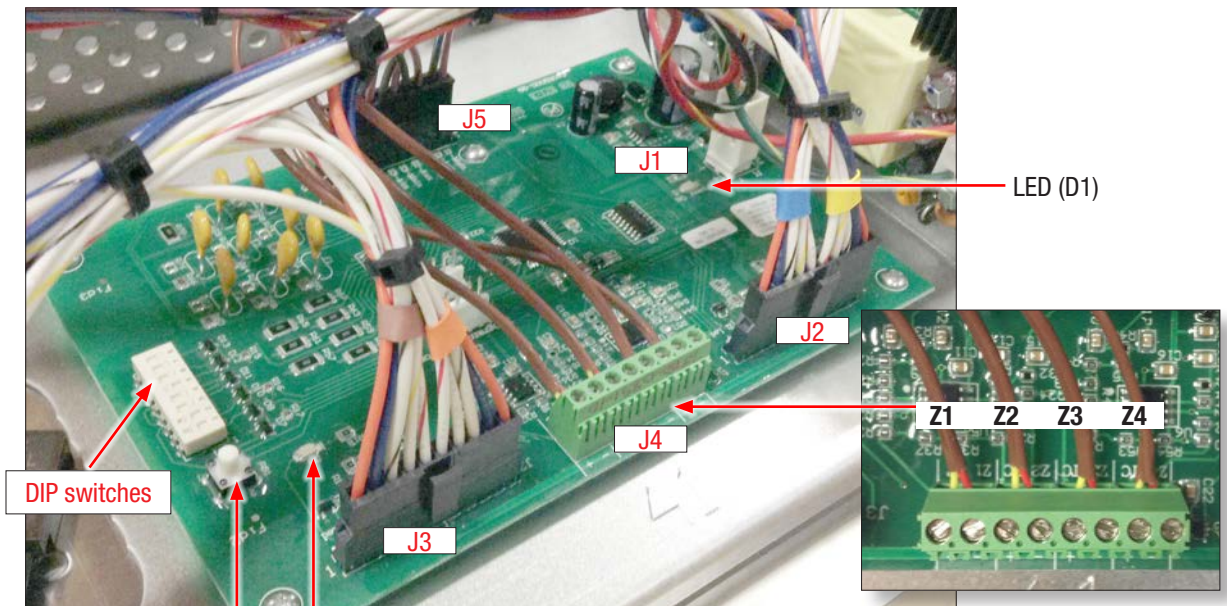
**DISASSEMBLY
(COUNTERTOP
MODELS
PRIOR TO
JAN 1, 2017**



**DISASSEMBLY
(COUNTERTOP
MODELS
AFTER
JAN 1, 2017**



**TEMPERATURE
CONTROL
BOARD**



White push-button LED D9

Photo 3

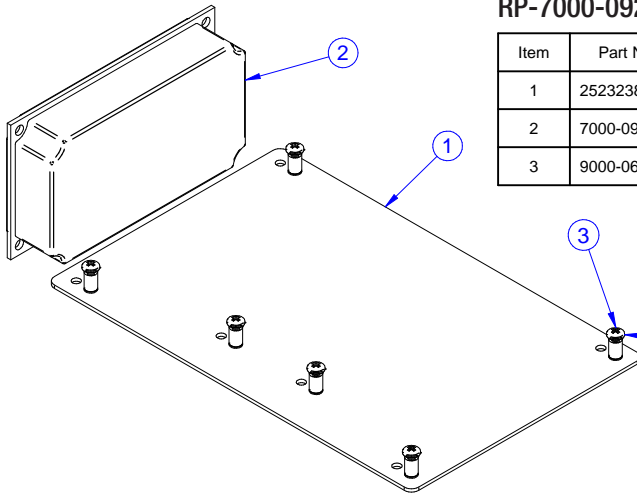
Photo 4



REPLACING THE POWER SUPPLY IN ELECTRIC COUNTERTOP PLANCHAS BUILT BEFORE 2/20/15 RP-7000-0922-01 POWER SUPPLY REPLACEMENT KIT REQUIRED

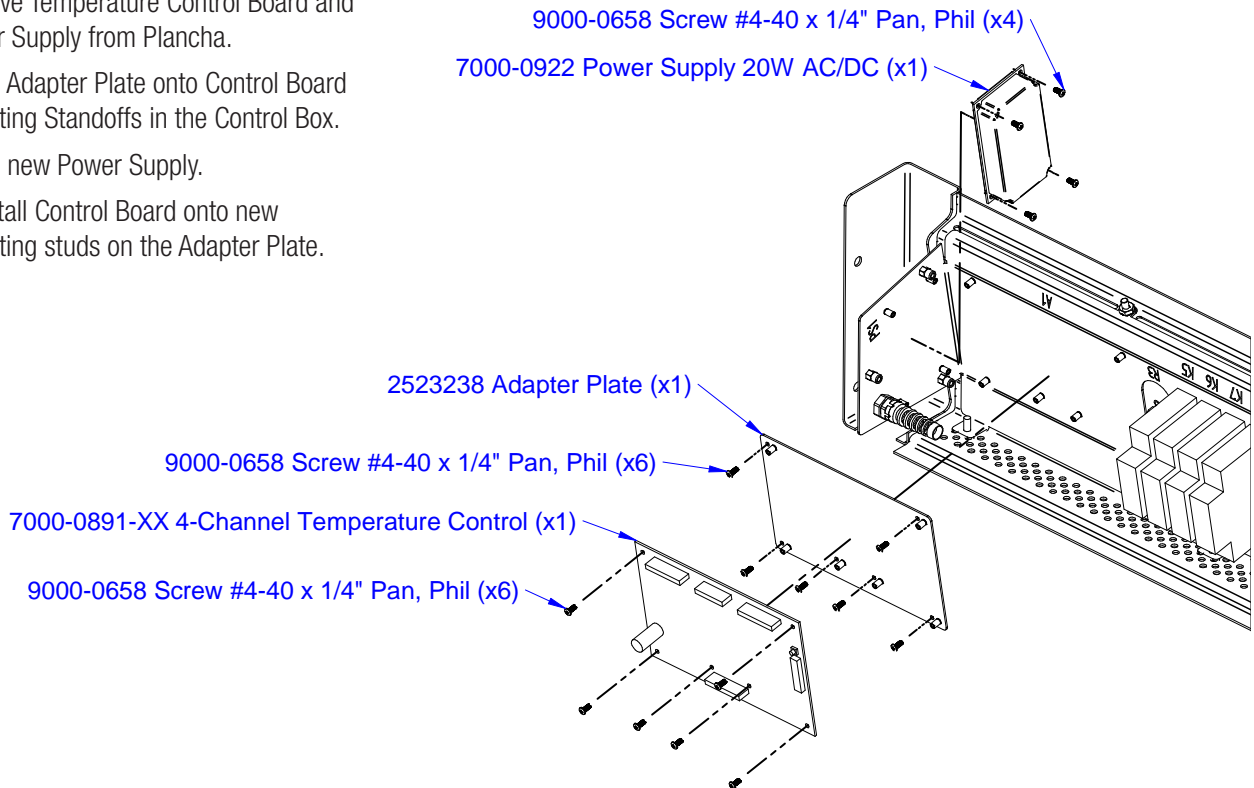
RP-7000-0922-01 REPLACEMENT KIT COMPONENTS:

Item	Part Number	Rev	Description	Material	Qty
1	2523238	0	Adapter Plate	Steel, Aluminized	1
2	7000-0922	0	Power Supply 20W AC/DC	(None)	1
3	9000-0658	0	Screw #4-40 x 1/4" Pan, Phil	Steel, Zinc Plated	6



REPLACEMENT PROCEDURE

1. Disconnect Plancha from power source.
2. Disconnect wire connectors from Control Board and Power Supply. Note positions for later reassembly.
3. Remove Temperature Control Board and Power Supply from Plancha.
4. Install Adapter Plate onto Control Board Mounting Standoffs in the Control Box.
5. Install new Power Supply.
6. Reinstall Control Board onto new mounting studs on the Adapter Plate.





ELECTRIC PLANCHA HEAT BOX CONDUCTIVITY CHECK TWO OR THREE PHASE: 4-ZONE COUNTERTOP OR 2-ZONE DROP-IN

Use this procedure to check if the heaters are all connected and not burned out or shorted to ground. A heater of this type will normally fail open circuit. In some cases, it may arc to ground and throw a circuit breaker. Even then, when tested, it will usually show open circuit; rarely will it maintain the short to ground. In the case of a failure initiated by a short, it is prudent to check the associated relay before reassembling the unit.

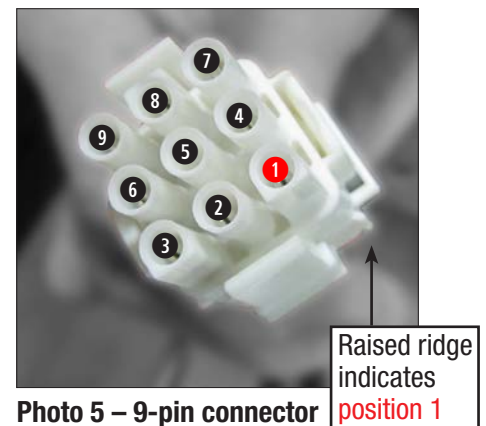
1. Unplug the unit from the wall outlet(s).

- a. A 4-zone unit may have two plugs (three prongs each) if it is 208 VAC or 240 VAC bi-phase. In that case, insure that BOTH plugs are disconnected from power. (A three-phase unit has only one plug with 4 prongs.)
- b. Access to the front panel:
 - i. Provide for support of the panel when it is removed. Also, support the panel while removing the screws.
 - ii. For a counter-top unit remove fasteners and tilt the front panel forward and down.
 For a drop-in, remove the grease tray(s) and pull straight forward after removing the fasteners.
 - iii. It is NOT necessary to remove the cover over the electronics unless testing at the relay terminals.
2. Refer to the Wiring Diagrams at the end of this manual and note that 1/2 of the relays control one large heater each (one per zone, heater P/N 7000-0882), and the other four relays each control two smaller heaters—in parallel—per zone. The two small heaters are different from each other: one is 69 ohms (this is the longer of the two, P/N 7000-0884) and the other is 89 ohms (the shorter; P/N 7000-0883). If you measure, say, 90 ohms, then the smaller one is there, so the OTHER one is bad (replace the 69 ohm heater). On the two zone units, there are three side heaters in parallel, two short and one long.
3. Perform just ONE of the following paragraphs (3a, 3b or 3c), based on the model you are testing. If trouble shooting an unknown problem, the information has been provided to allow measurement from the relay terminal (Relay column) thus including all of the wires and contacts going to and from the heater. If just checking the heater box, just measure from the connector(s) (usually, P5 et al.). Refer to the appropriate Wiring Diagram at the back of the manual for full details.

a. 4-Zone Countertop (CT) with grease trough in the front only.

- i. Take a bare copper conductor (or alligator clip style jumpers) and short together all of the blades including the ground pin on the power plug (both plugs if there are two).
 1. This action makes it possible to make every test between chassis ground and one other point and avoid having to access and remove the side cover—or determine which line corresponds to which plug blade.
- ii. Make the indicated measurements from the specified pin to ground and record the results, per the table below (see Photo 5). Your measurements should be within +/-2 ohms or less of the specified value. (**Note:** For solid state relays, test at terminal T1, rather than terminal 4 as indicated in the table below.)
- iii. After completion:
 1. Remove all of the shorting apparatus from (all) of the power plug(s). **Do NOT plug in the unit yet.**
 2. Check each of the same pins as before; there should be an open circuit to ground (or at least several mega-ohms if your meter can measure mega-ohms).

Relay	Heater Cable Plug-Pin	Heaters	Heater Resistance	Record
K2-4	P5-1	HR1	20 Ω	
K1-4	P5-2	HR7 II HR8	40 Ω	
K3-4	P5-3	HR3	20 Ω	
K5-4	P5-4	HR9 II HR10	40 Ω	
K4-4	P5-6	HR5 II HR6	40 Ω	
K6-4	P5-7	HR2	20 Ω	
K8-4	P5-8	HR11 II HR12	40 Ω	
K7-4	P5-9	HR4	20 Ω	





b. 4-Zone Drop-In (flat Anderson connectors).

- i. This test is done only at the connectors and does not require shorting the power plugs.
- ii. Make the indicated measurements from the specified pin to ground and record the results, per the table below (see Photo 6). Your measurements should be within +/-2 ohms or less of the specified value.
- iii. Choose one of the plugs and measure from each pin to chassis ground; there should be an open circuit to ground (or at least several mega-ohms if your meter can measure mega-ohms).

Relay	Heater Cable Plug-Pin B	Heater Cable Plug-Pin B	Heaters	Heater Resistance	Record
K2-4	P5-1	P6-1	HR1	20 Ω	
K1-4	P5-2	P6-2	HR7 HR8	40 Ω	
K3-4	P5-3	P6-3	HR3	20 Ω	
K5-4	P5-4	P6-4	HR9 HR10	40 Ω	
K7-4	P5-5	P6-8	HR4	20 Ω	
K4-4	P5-6	P6-5	HR5 HR6	40 Ω	
K6-4	P5-7	P6-6	HR2	20 Ω	
K8-4	P5-8	P6-7	HR11 HR12	40 Ω	

c. 2-Zone Drop-In

- i. The two-zone drop-in heaters are most easily tested from the relays.
- ii. **The first step MUST be to disconnect power at the circuit breaker. Lock-out or tag-out the breaker as required to insure it is not accidentally turned on. There is no other sure way to remove voltage from the switches on a drop-in.**
- iii. Open the cover to the electronics and verify with a meter that voltage is off to all three (3 phase) or two (bi-phase) line inputs.
- iv. Measure the resistance between terminals 2 and 4 of each relay as indicated in the table below (see Photo 6).

Relay	Heaters	Heater Resistance	Record
K1-2,4	HR3 HR4 HR5	27 Ω	
K2-2,4	HR1	20 Ω	
K3-2,4	HR2	20 Ω	
K4-2,4	HR6 HR7 HR8	27 Ω	

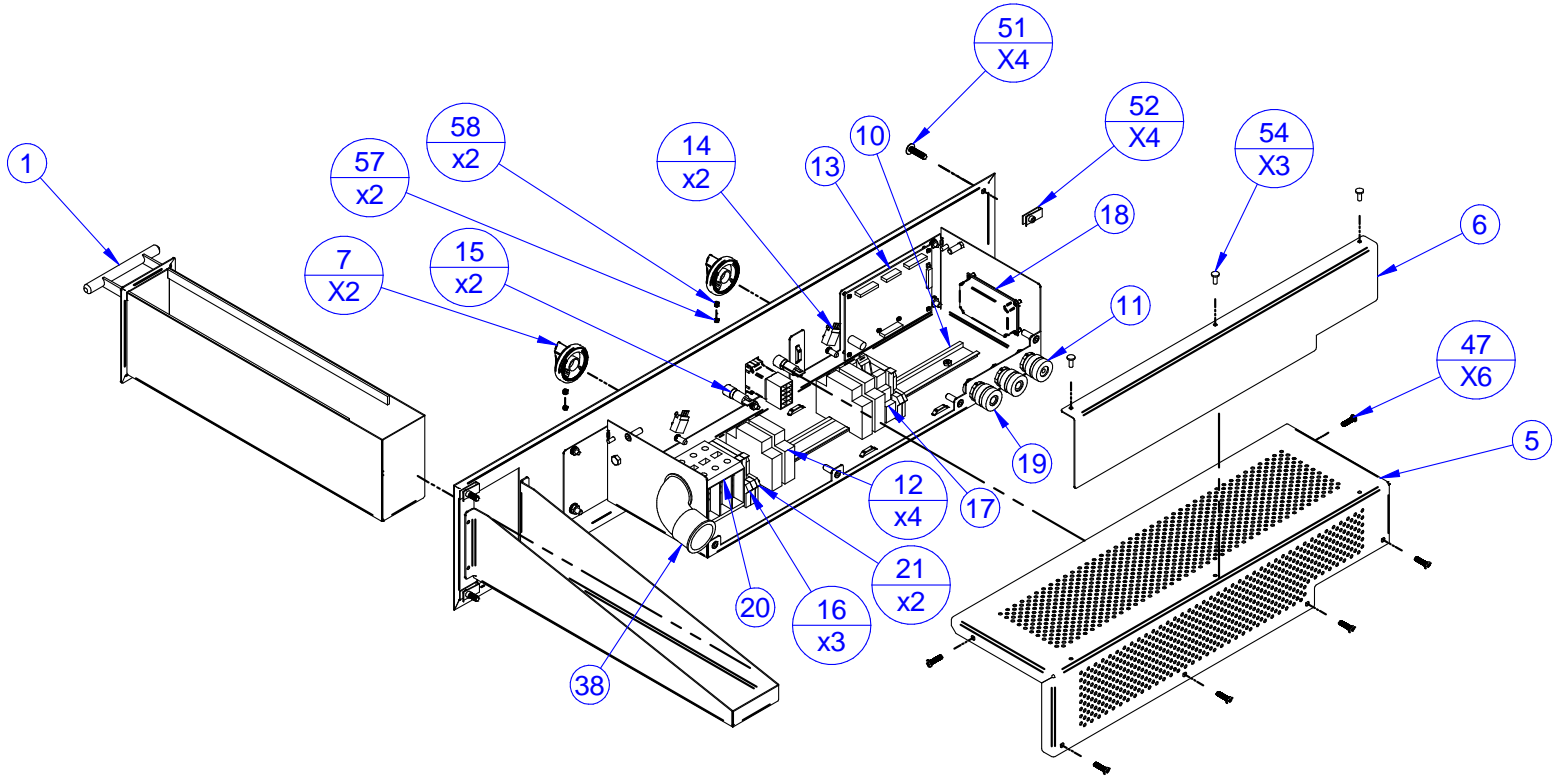
- v. If the parallel heaters measure 27 Ω, they are all good; 44.5: long one bad; 40: one short one bad; 69: two short ones bad.
- vi. Check either terminal 4 or 4 (both if there was an open circuit between them) on every relay to chassis ground. You should always see an open circuit or several mega-ohms.



Photo 6 - Drop-in controller



3429/2934-MTL-DI CONTROL BOX





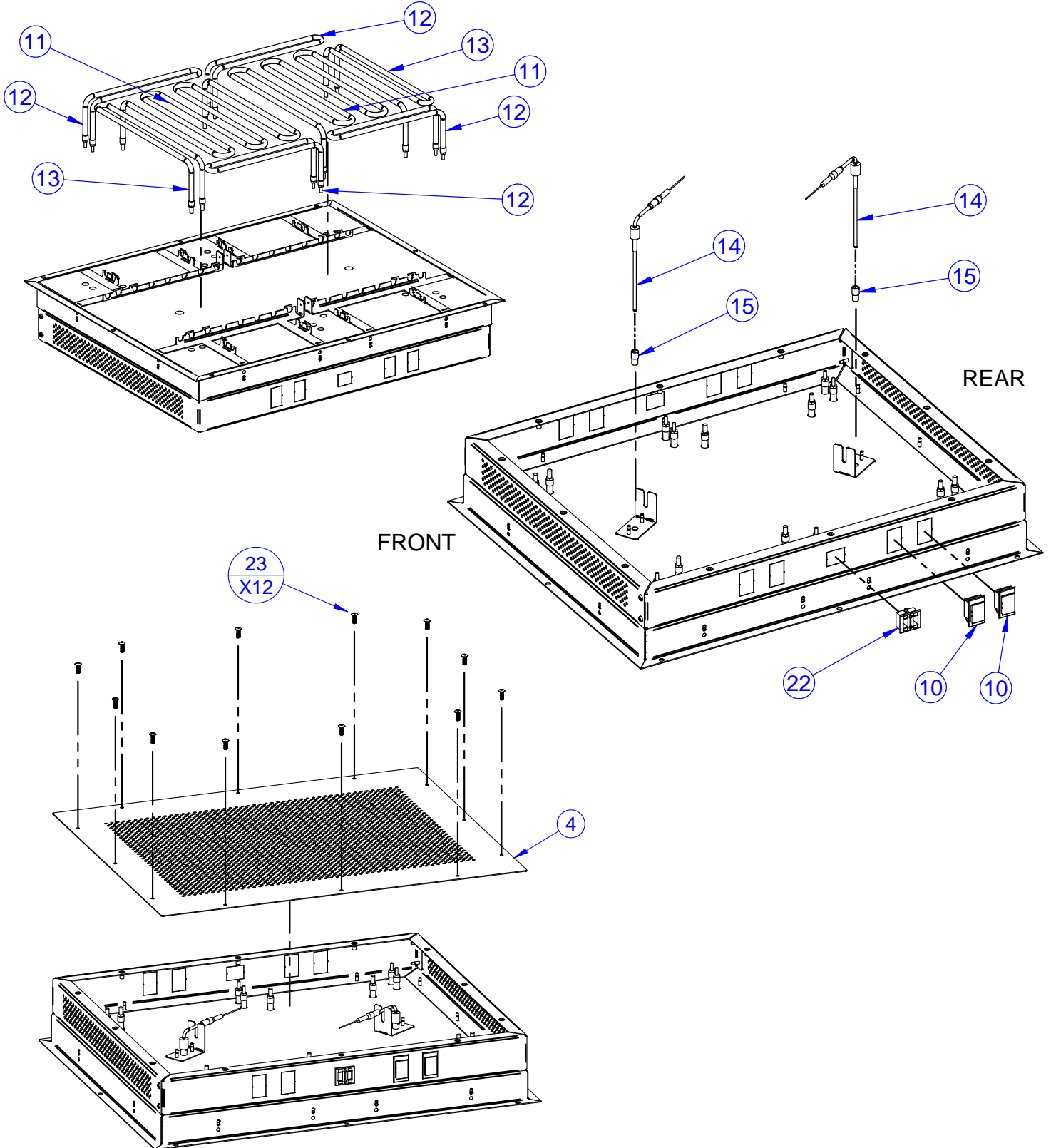
3429/2934-MTL-DI CONTROL BOX

Item	Part Number	Rev	Description	Qty
1	002-PL1502-1	0	Grease Reservoir Assembly	1
2	1542205	1	Bracket - Grease Reservoir	1
3	1642214	3	Façade - Control Box	1
4	2522233	1	Main Body - Control Box	1
5	2522234	0	Cover - Control Box	1
6	2522235	0	IR Shield - Control Box	1
7	50PL-1302-S	0	Control Knob for 0.248" Shaft	2
8	50PL-1505	0	Knob Bump Guard Weldment	1
9	7000-0126	0	Lock Nut, 1/2" NPSM	3
10	7000-0706	0	DIN Rail 7.5mm x 35mm	1.80 Feet
11	7000-0707	0	1/2" Cord Grip - .190" - .250"	1
12	7000-0865-1	0	Solid State Relay - 4-32 VDC	4
13	7000-0891-XX	0	4-Channel Temperature Control	1
14	7000-0894-1	0	Potentiometer	2
15	7000-0895	0	Panel Light 24V Green	2
16	7000-0899	0	Fuse Terminal Block	3
17	7000-0916	0	Relay - 2 Pole	1
18	7000-0922	0	Power Supply 20W AC/DC	1
19	7000-0926	0	1/2" Cord Grip - .500" - .630"	2
20	7000-0933	0	Distribution Block 3-pole, DIN Mount	1
21	7000-0934	0	End Plate - Fuse Terminal Block	2
22*	7000-0935	0	SEO Cable - 4 Cond., 14ga, 105°C	10.00 Feet
23*	7000-0937-2	0	Finger Proof Connector 15/45 Amp - Black	2
24*	7000-0937-3	0	Finger Proof Connector 15/45 Amp - Blue	3
25*	7000-0937-4	0	Finger Proof Connector 15/45 Amp - Red	3
26*	7000-0937-5	0	Spacer Connector Short - Red	4
27*	7000-0938	0	30 Amp Contact - 12/16 AWG	8
28*	7000-0939	0	6-Pole Plug w/ Latch	2
29*	7000-0940	0	Connector Housing - 2 pos.	1
30*	7000-0941	0	Connector Housing - 3 Pos.	1

Item	Part Number	Rev	Description	Qty
31*	7000-0942	0	Connector Housing - 4 pos.	1
32*	7000-0943	0	Crimp Terminal	6
33*	7000-0946-1	0	On/Off Switch Body, OTTO, Lighted	1
34*	7000-0946-2	0	Gasket, OTTO On/Off Switch	1
35*	7000-0946-3	0	Connector Harness	1
36*	7000-0946-4	0	Quick Connect Terminal, 18-14 AWG	5
37	7000-0951-1	0	Ball Plunger #8-32 Delrin Ball	2
38	7000-0952	0	Squeeze Connector 90° 1-1/4" Flex	1
39	7000-0953	0	1-1/4" Conduit Locknut	1
40*	7000-0964	0	3mm 10 Circuit Housing	2
41*	7000-0965	0	Crimp Terminal Female	15
42*	7000-0970	0	Fuse - 2 Amp, 500VAC, 400VDC	3
43	7000-0982	0	Ground Block - DIN Mount	1
44	70CE-0066	0	Copper Ground Lug	1
45	9000-0050	0	Nut, 8-32 Hex	3
46	9000-0123	0	10-32 Kep Nut	3
47	9000-0124	0	Screw Phil Pan Head #10-32 x 3/4"	6
48	9000-0127	0	10-32 UNF x 1/2 Carriage Bolt - Round Head	3
49	9000-0250	0	1/4-20 Fin Hex Nut	1
50	9000-0251	0	1/4-20 x 1/2" Hex Bolt	1
51	9000-0273	0	1/4"-20 X 1" Phil Truss HD SS	4
52	9000-0279	0	Tinnerman Nut 1/4-20	4
53	9000-0291	0	1/4"-20 x 3/4" Carriage Bolt	2
54	9000-0527	0	Rivet .188 SS .063-.125	3
55	9000-0554	0	1/4-20 Kep Nut	2
56	9000-0658	0	Screw #4-40 x 1/4" Pan, Phil	10
57	9000-0666	0	Set Screw #10-24 x 3/16" Slotted	2
58	9000-0667	0	Set Screw #10-24 x 1/4"	2



3429/2934-MTL-DI HEAT BOX



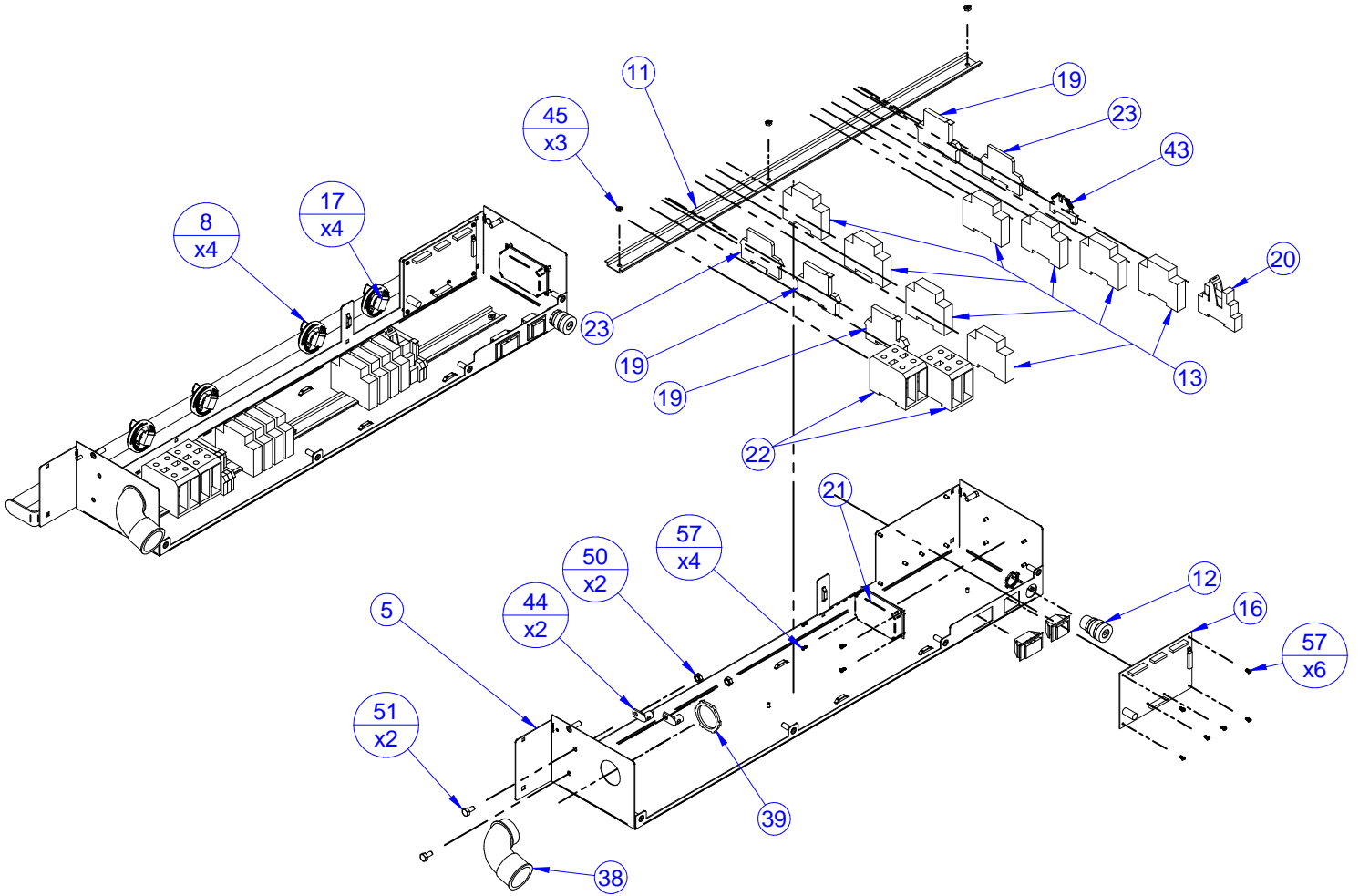


3429/2934-MTL-DI HEAT BOX

Item	Part Number	Rev	Description	Qty
1	1542220	0	Element Support A	2
2	1542221	0	Element Support B	2
3	2522218	1	Wall - Element Box	2
4	2522219	0	Cover - Element Box	1
5	2522220	3	Tray - Element Box	1
6	2522277	0	Thermocouple Anti-Rotate Bracket	2
7*	4000-0029	0	1/2" Magnaboard Rigid	5.3 SqFt
8*	4000-0060	0	10MM PyroGel XT (.400")	17 SqFt
9*	6000-0187	0	.005" SS Foil	4 LnFt
10	7000-0872	0	Snap-In Receptacle - Anderson Powerpole	2
11	7000-0882	0	3/8" Watrod 13-5/8" x 7-7/8" x 3-1/4"	2
12	7000-0883	0	3/8" Watrod 10-3/8" x 1-3/8" x 3-1/4"	4
13	7000-0884	0	3/8" Watrod 13-5/8" x 1-3/8" x 3-1/4"	2
14	7000-0919-1	0	Thermocouple	2
15	7000-0920	0	Bayonet Adapter	2
16*	7000-0937-2	0	Finger Proof Connector 15/45 Amp - Black	2
17*	7000-0937-3	0	Finger Proof Connector 15/45 Amp - Blue	3
18*	7000-0937-4	0	Finger Proof Connector 15/45 Amp - Red	3
19*	7000-0937-6	0	Spacer Connector Long - Red	4
20*	7000-0938	0	30 Amp Contact - 12/16 AWG	8
21*	7000-0963	0	Ring Terminal 16-14AWG, Non-Insul, High-Temp	24
22	7000-0977	0	Thermocouple Bulkhead	1
23	9000-0132	0	Screw 10-32 X 5/8" Truss HD MS SS	12
24	9000-0354	0	Cotter Pin	2
25	9000-0538	0	.188" Blind Rivet, MS, .063 - .125	20
26*	WW0103-BK	0	Stranded Wire, UL3071 SF-2, 14 AWG, Black	20.00 In.



4434-MTL-DI CONTROL BOX





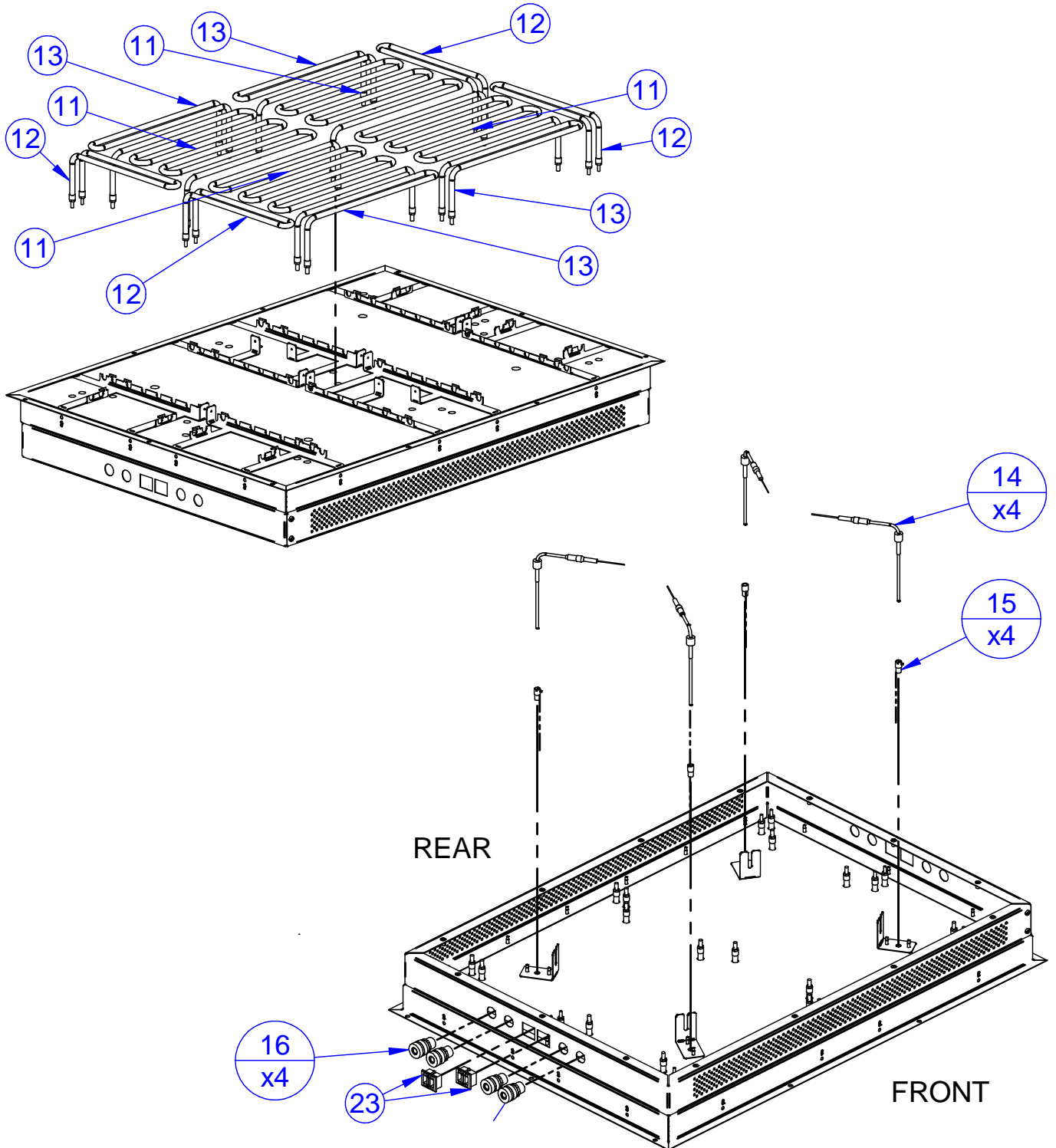
4434-MTL-DI CONTROL BOX

Item	Part Number	Rev	Description	Qty
1*				1
2	002-PL1502-1	0	Grease Reservoir Assembly	2
3	1542205	1	Bracket - Grease Reservoir	2
4	1642210	3	Façade - Control Box	1
5	2522227	1	Main Body - Control Box	1
6	2522228	0	Cover - Control Box	1
7	2522236	0	IR Shield - Control Box	1
8	50PL-1302-S	2	Control Knob for 0.248" Shaft	4
9	50PL-1603	1	Knob Bump Guard Weldment	1
10*	7000-0126	0	Lock Nut, 1/2" NPSM	1
11	7000-0706	0	DIN Rail 7.5mm x 35mm	2.50 Feet
12	7000-0707	0	1/2" Cord Grip - .190" - .250"	1
13	7000-0865-1	0	Solid State Relay - 4-32 VDC	8
14*	7000-0867	0	Snap-In Receptacle - Anderson Powerpole	1
15*	7000-0872	0	Snap-In Receptacle - Anderson Powerpole	1
16	7000-0891-XX	0	4-Channel Temperature Control	1
17	7000-0894-1	0	Potentiometer	4
18	7000-0895	0	Panel Light 24V Green	4
19	7000-0899	0	Fuse Terminal Block	3
20	7000-0916	0	Relay - 2 Pole	1
21	7000-0922	0	Power Supply 20W AC/DC	1
22	7000-0933-1	0	Distribution Block 2-pole, DIN Mount	2
23	7000-0934	0	End Plate - Fuse Terminal Block	2
24*	7000-0935	0	SEO Cable - 4 Cond., 14ga, 105°C	20.00 Feet
25*	7000-0937-2	0	Finger Proof Connector 15/45 Amp - Black	5
26*	7000-0937-3	0	Finger Proof Connector 15/45 Amp - Blue	6
27*	7000-0937-4	0	Finger Proof Connector 15/45 Amp - Red	5
28*	7000-0937-5	0	Spacer Connector Short - Red	8
29*	7000-0938	0	30 Amp Contact - 12/16 AWG	16
30*	7000-0940	0	Connector Housing - 2 pos.	1

Item	Part Number	Rev	Description	Qty
31*	7000-0941	0	Connector Housing - 3 Pos.	1
32*	7000-0942	0	Connector Housing - 4 pos.	1
33*	7000-0943	0	Crimp Terminal	6
34*	7000-0946-1	0	On/Off Switch Body, OTTO, Lighted	1
35*	7000-0946-3	0	Connector Harness	1
36*	7000-0946-4	0	Quick Connect Terminal, 18-14 AWG	5
37	7000-0951-1	0	Ball Plunger #8-32 Delrin Ball	4
38	7000-0952	0	Squeeze Connector 90° 1-1/4" Flex	1
39	7000-0953	0	1-1/4" Conduit Locknut	1
40*	7000-0964	0	3mm 10 Circuit Housing	3
41*	7000-0965	0	Crimp Terminal Female	29
42*	7000-0970	0	Fuse - 2 Amp, 500VAC, 400VDC	3
43	7000-0982	0	Ground Block - DIN Mount	1
44	70CE-0066	0	Copper Ground Lug	2
45	9000-0050	0	Nut, 8-32 Hex	3
46	9000-0053	0	Nut, 8-32 KEP	8
47	9000-0123	0	10-32 Kep Nut	4
48	9000-0124	0	Screw Phil Pan Head #10-32 x 3/4"	6
49	9000-0127	0	10-32 UNF x 1/2 Carriage Bolt - Round Head	4
50	9000-0250	0	1/4-20 Fin Hex Nut	2
51	9000-0251	0	1/4-20 x 1/2" Hex Bolt	2
52	9000-0273	0	1/4"-20 X 1" Phil Truss HD SS	6
53	9000-0279	0	Tinnerman Nut 1/4-20	6
54	9000-0291	0	1/4"-20 x 3/4" Carriage Bolt	2
55	9000-0527	0	Rivet .188 SS .063-.125	3
56	9000-0554	0	1/4-20 Kep Nut	2
57	9000-0658	0	Screw #4-40 x 1/4" Pan, Phil	10
58	9000-0666	0	Set Screw #10-24 x 3/16" Slotted	4
59	9000-0667	0	Set Screw #10-24 x 1/4"	4

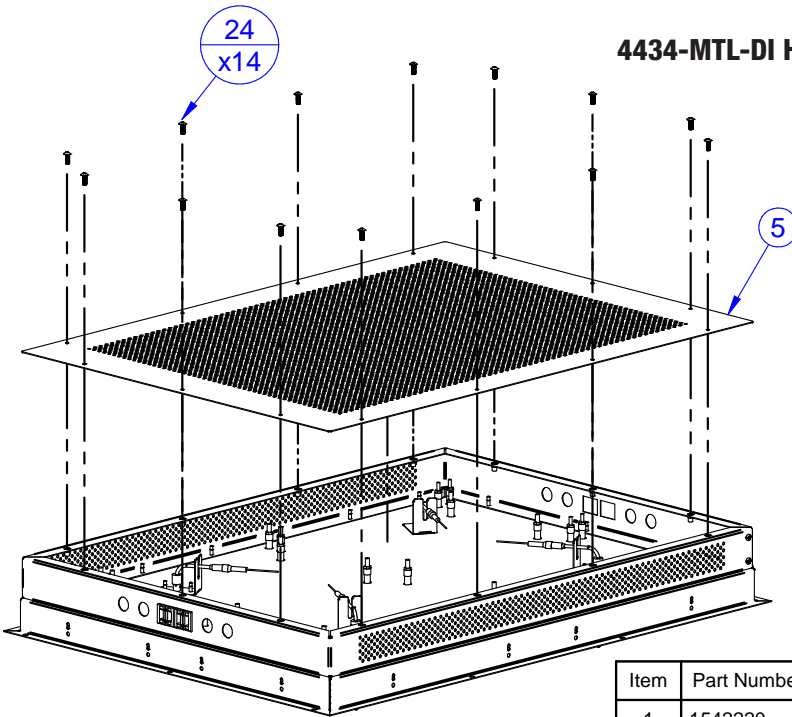


4434-MTL-DI HEAT BOX





4434-MTL-DI HEAT BOX

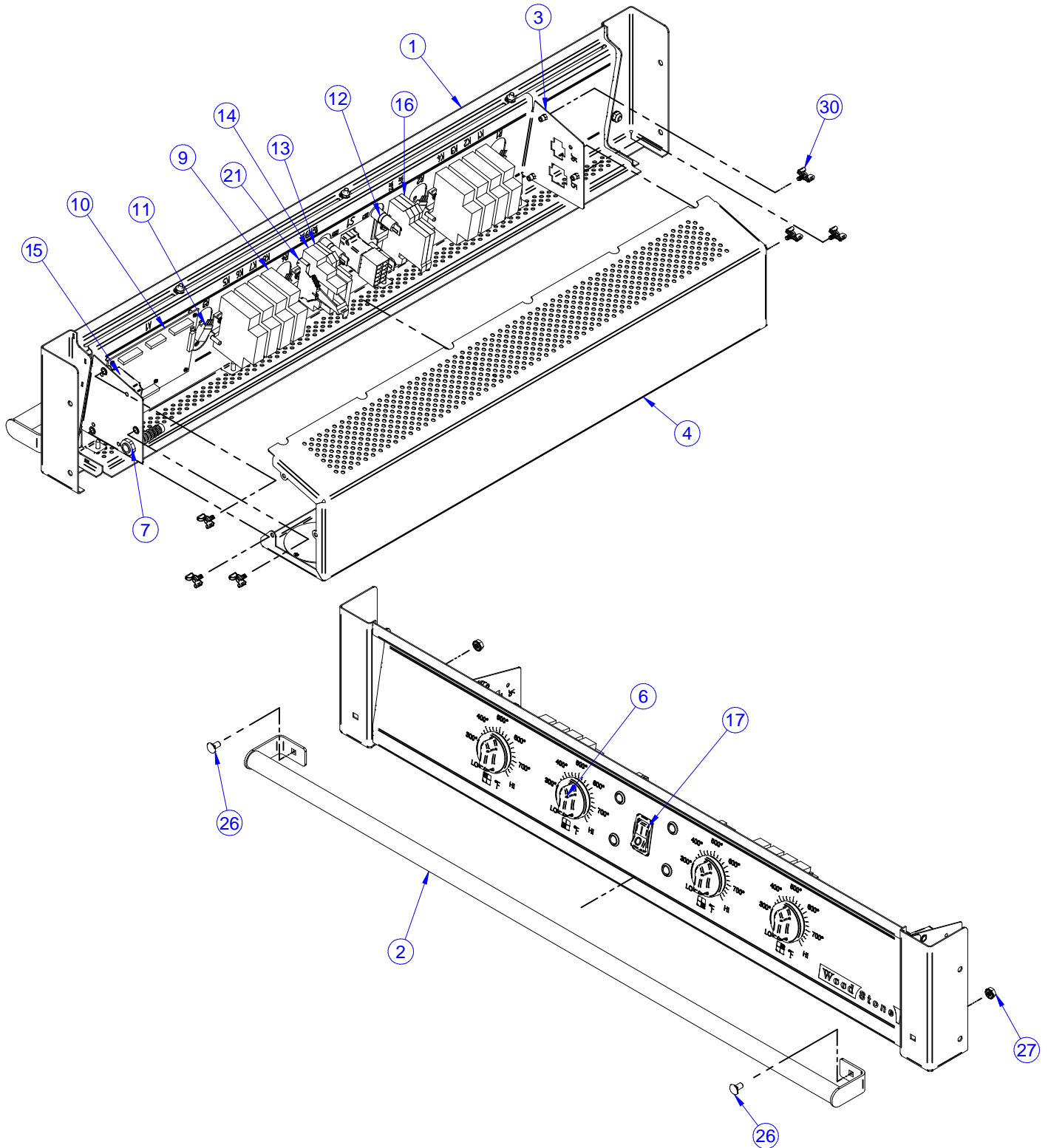


Item	Part Number	Rev	Description	Qty
1	1542220	0	Element Support A	2
2	1542221	0	Element Support B	2
3	1542222	0	Element Support C	2
4	2522215	1	Wall - Element Box	2
5	2522216	0	Cover - Element Box	1
6	2522217	2	Tray - Element Box	1
7	2522277	1	Thermocouple Anti-Rotate Bracket	4
8*	4000-0029	0	1/2" Magnaboard Rigid	7.5 SqFt
9*	4000-0060	0	10MM PyroGel XT (.400")	28 SqFt
10*	6000-0187	0	.005" SS Foil	7 LnFt
11	7000-0882	0	3/8" Watrod 13-5/8" x 7-7/8" x 3-1/4"	4
12	7000-0883	0	3/8" Watrod 10-3/8" x 1-3/8" x 3-1/4"	4
13	7000-0884	0	3/8" Watrod 13-5/8" x 1-3/8" x 3-1/4"	4
14	7000-0919-1	0	Thermocouple	4
15	7000-0920	0	Bayonet Adapter	4
16	7000-0926	0	1/2" Cord Grip - .500" - .630"	4
17*	7000-0937-2	0	Finger Proof Connector 15/45 Amp - Black	5
18*	7000-0937-3	0	Finger Proof Connector 15/45 Amp - Blue	6
19*	7000-0937-4	0	Finger Proof Connector 15/45 Amp - Red	5
20*	7000-0937-6	0	Spacer Connector Long - Red	8
21*	7000-0938	0	30 Amp Contact - 12/16 AWG	16
22*	7000-0963	0	Ring Terminal 16-14AWG, Non-Insul, High-Temp	32
23	7000-0977	0	Thermocouple Bulkhead	2
24	9000-0132	0	Screw 10-32 X 5/8" Truss HD MS SS	14
25	9000-0354	0	Cotter Pin	8
26	9000-0530	0	.188" Blind High-Strg Rivet, SS, .063 - .270	30
27*	WW0103-BK	0	Stranded Wire, UL3071 SF-2, 14 AWG, Black	35.00 In.



4035-(MTL, STN)-CT CONTROL BOX

MODELS PRODUCED BEFORE 1/1/2017





4035-(MTL, STN)-CT CONTROL BOX

MODELS PRODUCED BEFORE 1/1/2017

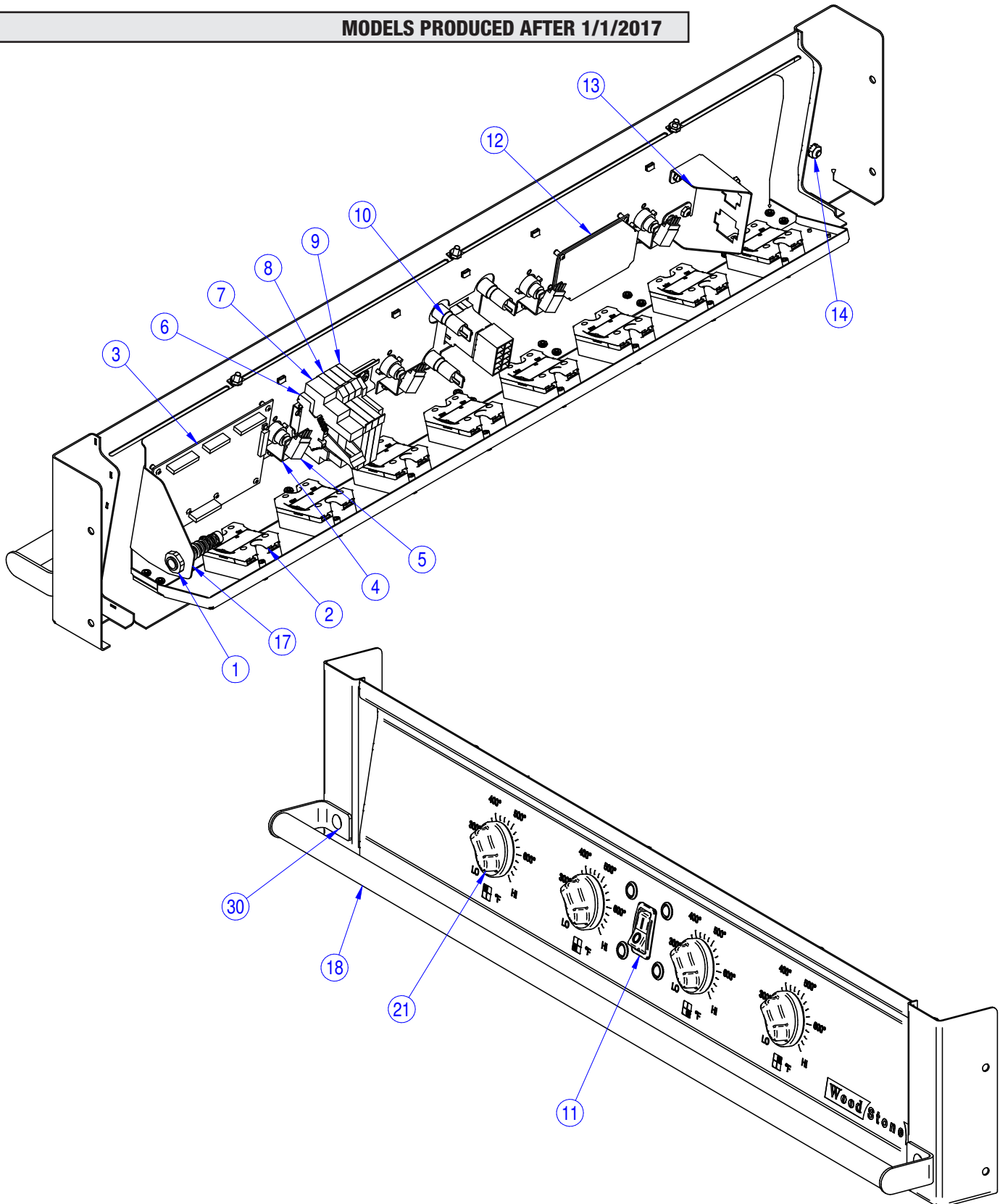
Item	Part Number	Rev	Description	Qty
1	002-PL1803-1	2	Facade Weldment	1
2	002-PL1803-2	0	Bump Bar Weldment	1
3	2522282	3	Electrical Box	1
4	2522283	0	Electrical Cover	1
5	2522287	0	Intake Baffle	3
6	50PL-1302-S	2	Control Knob for 0.248" Shaft	4
7	7000-0172	0	1/2" NPT Cord Grip Fitting	1
8*	7000-0706	0	DIN Rail 7.5mm x 35mm	1.00 Ft
9	7000-0865-1	0	Solid State Relay - 4-32 VDC	8
10	7000-0891-XX	0	4-Channel Temperature Control	1
11	7000-0894-1	0	Potentiometer	4
12	7000-0895	0	Panel Light 24V Green	4
13	7000-0899	0	Fuse Terminal Block	3
14	7000-0916	0	Relay - 2 Pole	1
15	7000-0922	0	Power Supply 20W AC/DC	1
16	7000-0934	0	End Plate - Fuse Terminal Block	2
17*	7000-0946-1	0	On/Off Switch Body, OTTO, Lighted	1
18	7000-0951-1	0	Ball Plunger #8-32 Delrin Ball	4
19*	7000-0970	0	Fuse - 2 Amp, 500VAC, 400VDC	3
20	7000-0982	0	Ground Block - DIN Mount	1
21	9000-0053	0	Nut, 8-32 KEP	8
22	9000-0057	0	Washer Flat #8	8
23	9000-0123	0	10-32 Kep Nut	3
24	9000-0127	0	10-32 UNF x 1/2 Carriage Bolt - Round Head	3
25	9000-0265	0	1/4-20 x 1/2 Carriage Bolt	2
26	9000-0522	0	NUT Kep 1/4-20	2
27	9000-0527	0	Rivet .188 SS .063-.125	4
28	9000-0658	0	Screw #4-40 x 1/4" Pan, Phil	16
29	9000-0675	0	Screw, Wing, #8-32 x 5/16"	6
30*	9000-0678	0	Ball Bearing - 3mm	4

→ If replacing Power Supply in a Plancha produced before **2/20/15**, Replacement Kit RP-7000-0922-01 is required (see page 13).



4035-(MTL, STN)-CT CONTROL BOX

MODELS PRODUCED AFTER 1/1/2017





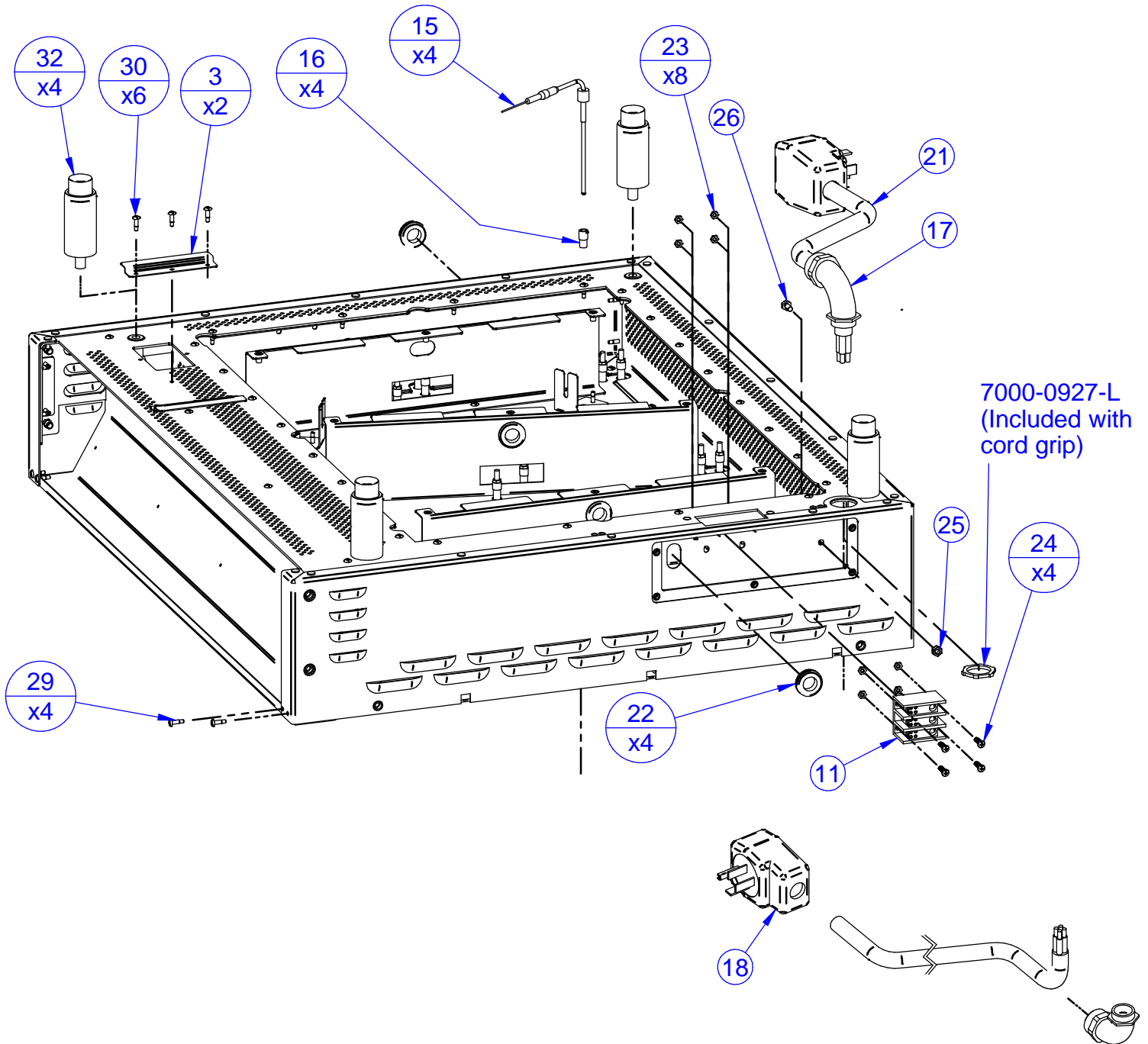
4035-(MTL, STN)-CT CONTROL BOX

MODELS PRODUCED AFTER 1/1/2017

Item Number	Description	Rev	Title	Quantity
1	7000-0172	0	1/2" NPT Cord Grip Fitting	1
2	7000-1760-1	0	Relay, Solid State 25A 230V Zero-Cross	8
3	7000-0891-XX	0	4-Channel Temperature Control	1
4	2523230	2	Pot Mounting Bracket	4
5	7000-0894-1	0	Potentiometer	4
6	7000-0982	0	Ground Block - DIN Mount	1
7	7000-0916	0	Relay - 2 Pole	1
8	7000-0899	0	Fuse Terminal Block	3
9	7000-0934	0	End Plate - Fuse Terminal Block	1
10	7000-0895	0	Panel Light 24V Green	4
11	7000-0946	0	On/Off Switch	1
12	7000-0922	0	Power Supply 20W AC/DC	1
13	2522423	0	Bulkhead connector mount	1
14	9000-0522	0	NUT Kep 1/4-20	2
15*	002-PL1810-1	0	Facade Weldment	1
16*	50PL-1105	0	Heatsink Plate	1
17*	2522289	0	Electrical Panel	1
18	002-PL1803-2	0	Bump Bar Weldment	1
19*	2522425	0	Drip Fence	1
20*	7000-1367	2	Bushing, 1/2" Flanged, Acetal	4
21	50PL-1308-S	0	Control Knob with .500 Shaft	4
22*	7000-1391	0	O-Ring, 3/8" ID, 1/2" OD, EPDM	8
23*	9000-0098	0	Screw, 10-32 x 1/2" Socket Head Cap	16
24*	9000-1414	0	Screw, 8-32 x 3/8" PH, Truss Head	18
25*	9000-0658	0	Screw, 4-40 x 1/4" PH, Pan Head	10
26*	9000-0221	0	1/8 Dia Blind Rivet, Countersunk, .126-.187	8
27*	9000-0127	0	Bolt, 10-32 x 1/2" Round Head Carriage	3
28*	9000-0053	0	Nut, 8-32 KEP	9
29*	9000-0123	0	Nut, 10-32 Kep	5
30	9000-0265	0	Bolt, 1/4-20 x 1/2" Carriage	2
31*	7000-0706-04	0	DIN Rail, 35 mm Top Hat x 4"	1
32*	9000-0302	0	Rivet, 1/8 dia. x 1/4, SS	9

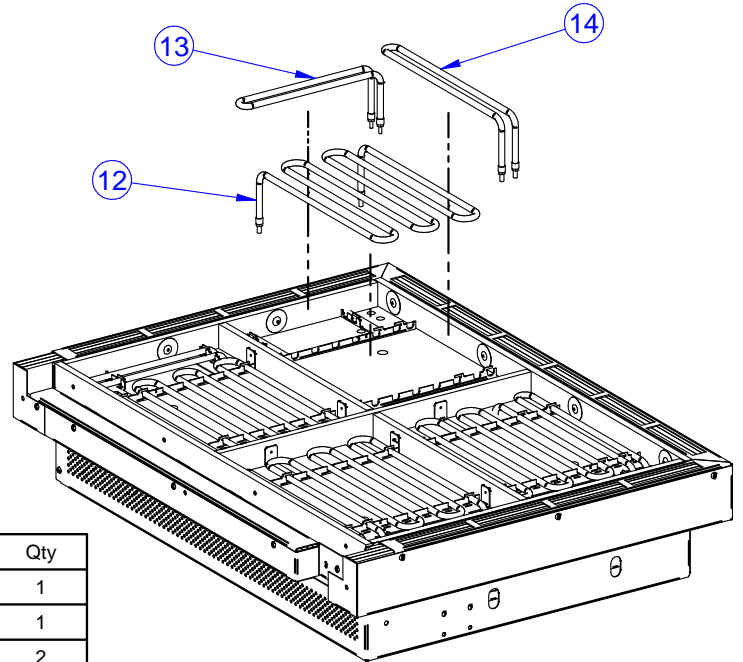


4035-(MTL, STN)-CT HEAT BOX





4035-(MTL, STN)-CT HEAT BOX



Item	Part Number	Rev	Description	Qty
1	002-PL1802-1	2	Heat Box Assembly - Insulation	1
2*	002-PL1806-P3	0	Wiring Harness Kit - Heat Box - 3 Phase	1
3	1632213	1	Bracket - Grease Reservoir Mount	2
4	1642218	2	Lagging	1
5	2522286	2	Partition	1
6	2522291	0	Cover Plate for Three Phase	1
7	2552201	1	Pan	1
8	2552205	0	Corner Bracket - Pan	4
9	2552206	1	Conduit Bracket - Pan	2
10	4000-0060-8	0	Partition Cover	1
11	7000-0838-1	0	3 Circuit Distribution Block	1
12	7000-0882	0	3/8" Watrod 13-5/8" x 7-7/8" x 3-1/4"	4
13	7000-0883	0	3/8" Watrod 10-3/8" x 1-3/8" x 3-1/4"	4
14	7000-0884	0	3/8" Watrod 13-5/8" x 1-3/8" x 3-1/4"	4
15	7000-0919-1	0	Thermocouple	4
16	7000-0920	0	Bayonet Adapter	4
17	7000-0927	0	1" Cord Grip 90°.812" - .938"	1
18	7000-0997	0	Plug, NEMA 15-50P, 50A 3ph 250VAC	1
19*	7000-0999	0	SOOW Cable, 6AWG, 4 Conductor	7.00 Ft.
20	7000-1279	0	Conduit Connector - 1" Trade	4
21*	7000-1280	0	Conduit - EMT 1" Trade	2.60 Ft.
22	70ROC-0008	0	Silicon_High Temperature_Grommet	4
23	9000-0115	0	#10-32 Nut	8
24	9000-0124	0	Screw Phil Pan Head #10-32 x 3/4"	4
25	9000-0250	0	1/4-20 Fin Hex Nut	1
26	9000-0251	0	1/4-20 x 1/2" Hex Bolt	1
27	9000-0305	0	Rivet, Blind 5/32" .126 - .187	4
28	9000-0528	0	Rivet .188 SS .126-.250	17
29	9000-0538	0	.188" Blind Rivet, MS, .063 - .125	4
30	9000-0671	0	.188" Blind Rivet, MS, .126 - .250	34
31	9000-0676	0	Rivet Blind CS, 3/16" .126-.375	25
32	RP-0019-1	0	Adjustable Leg	4

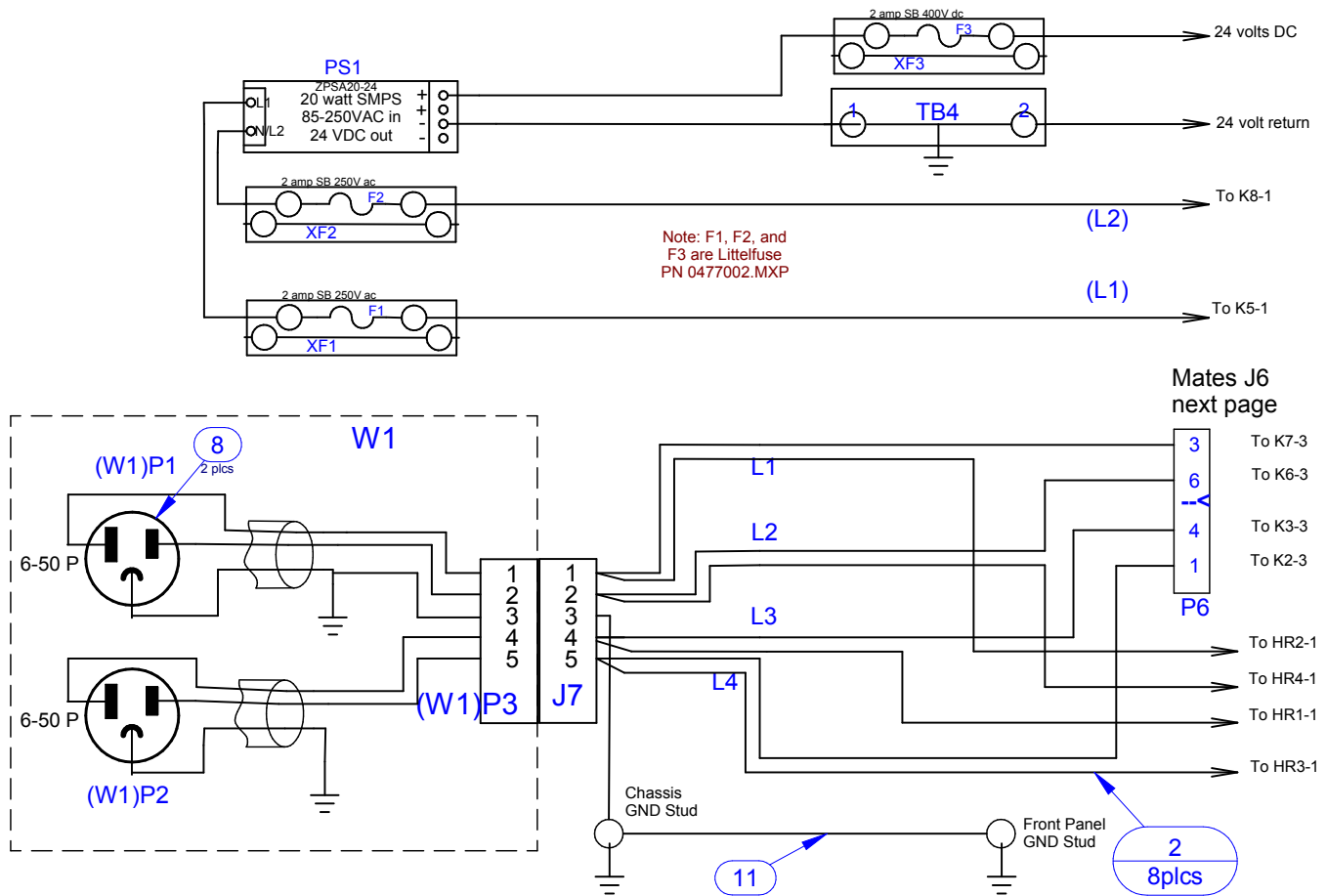


4-ZONE -CT
208/240 VAC
1 PHASE

MODELS PRODUCED BEFORE 1/1/2017

Plancha, 4-Zone, Countertop
208 / 240 VAC, dual supply and disconnect

Sheet: 2 of 4



NOTE: MUST be connected ONLY to the voltage specified on the equipment data plate.

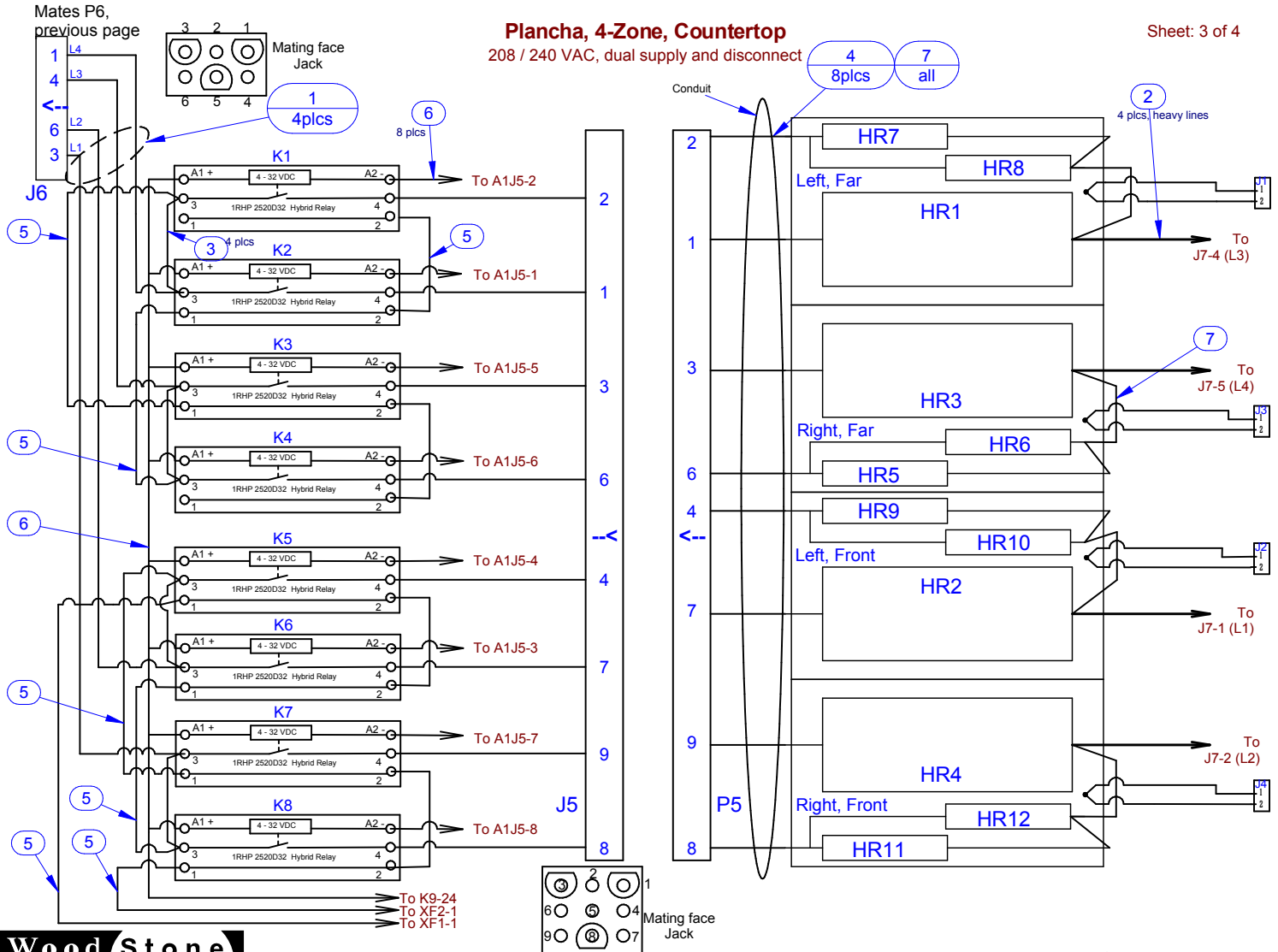


4-ZONE -CT
208/240 VAC
1 PHASE

MODELS PRODUCED BEFORE 1/1/2017

Plancha, 4-Zone, Countertop
208 / 240 VAC, dual supply and disconnect

Sheet: 3 of 4



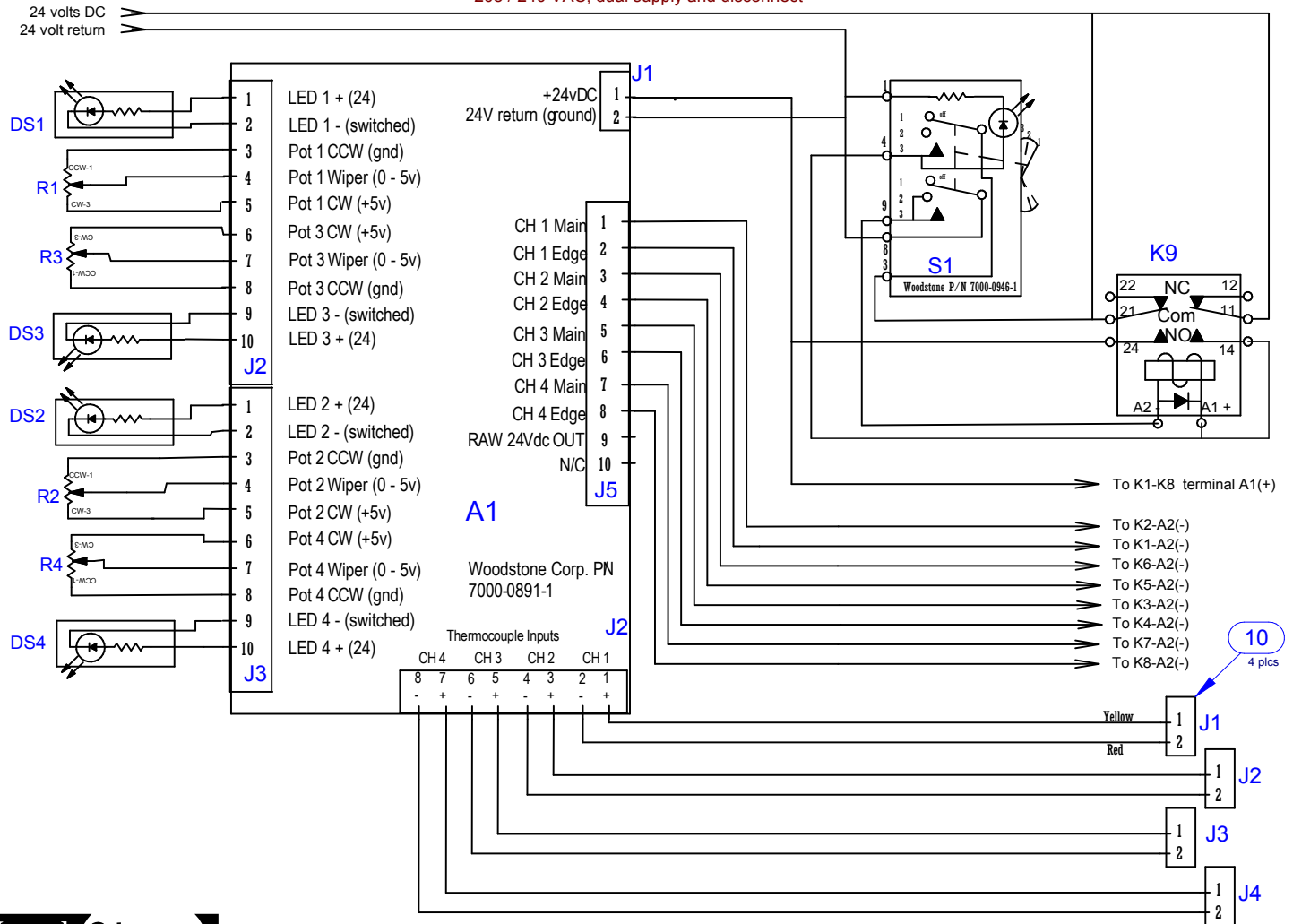


4-ZONE -CT
208/240 VAC
1 PHASE

MODELS PRODUCED BEFORE 1/1/2017

Plancha, 4-Zone, Countertop
208 / 240 VAC, dual supply and disconnect

Sheet: 4 of 4



Low Voltage Controls and Power Latching Circuit

DIAG #: WD402 Rev. 0
DATE: 2/28/2014

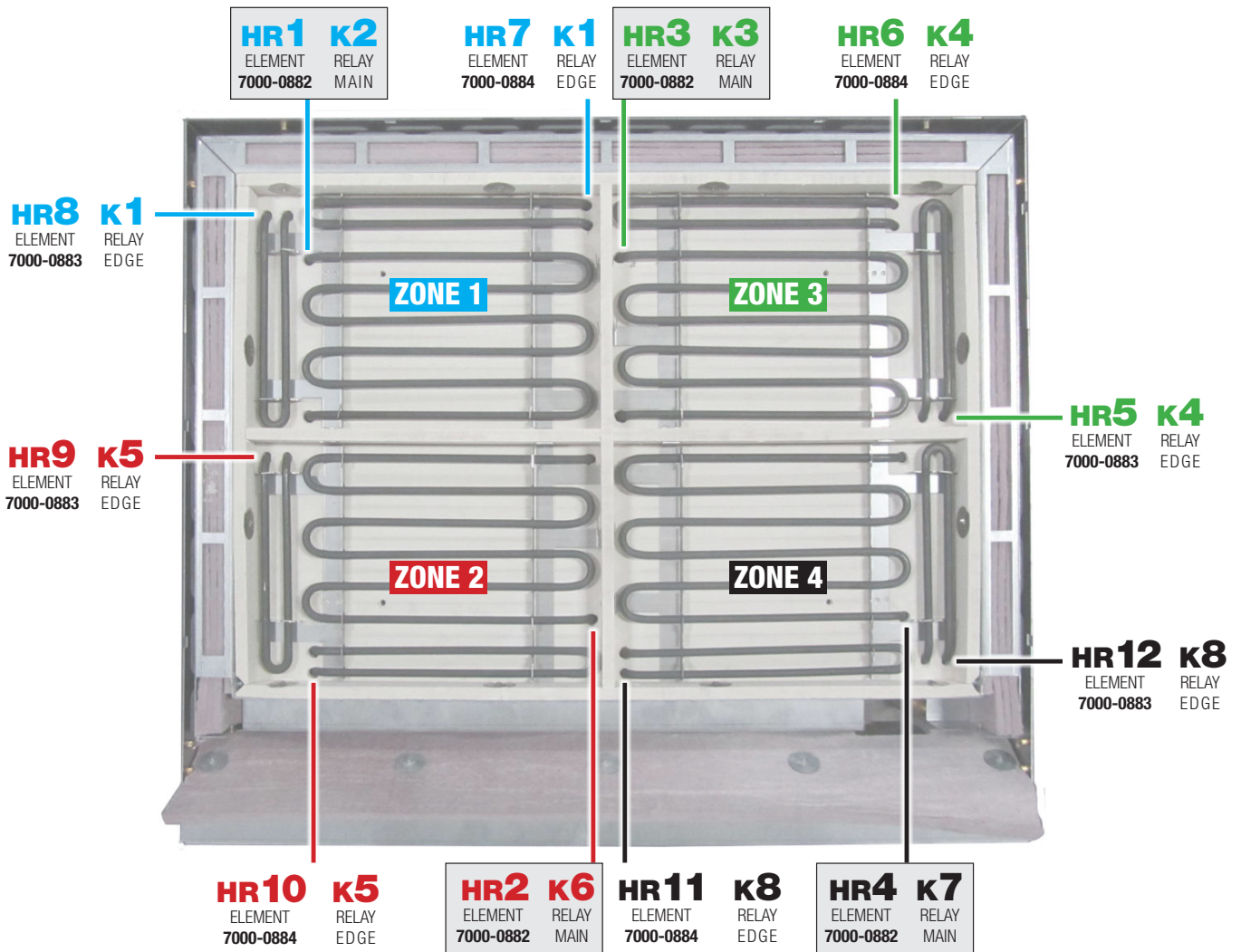


Bellingham, WA +1(360)650-1111 www.woodstone-corp.com

NOTE: MUST be connected ONLY to the voltage specified on the equipment data plate.



PL-MTL POWER SWITCHING & HEATING ELEMENTS GRAPHIC DISPLAY (4-Zone, 1 & 3 Phase Models)



Relay Location	ZONE 1	ZONE 3	ZONE 4	ZONE 2
	K1 • K2	K3 • K4	K8 • K7	K6 • K5

Relay Control	
<p>Main Relays Center Main Element in each zone controlled by individual relay</p> <p>ZONE 1 K2 ZONE 2 K6 ZONE 3 K3 ZONE 4 K7</p>	<p>Edge Relays Both Edge Elements in each zone controlled by common relay</p> <p>ZONE 1 K1 ZONE 2 K5 ZONE 3 K4 ZONE 4 K8</p>

Temp. Knob Control
1 2 4 3

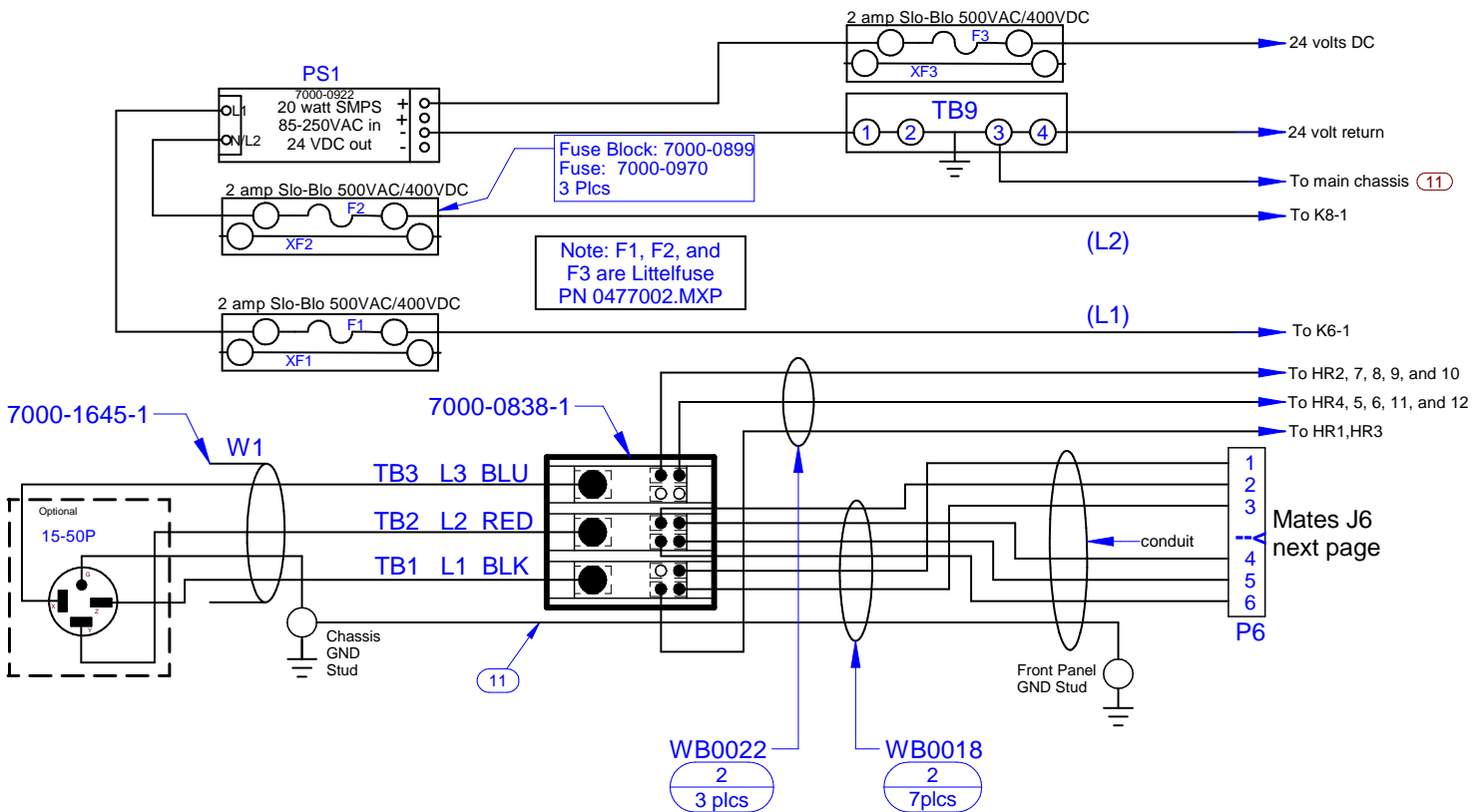


4-ZONE -CT
208/240 VAC
3 PHASE

MODELS PRODUCED BEFORE 1/1/2017

Plancha, 4-Zone, Countertop
208/240 VAC 3 Phase DELTA

Sheet: 2 of 4



NOTE: MUST be connected ONLY to the voltage specified on the equipment data plate.

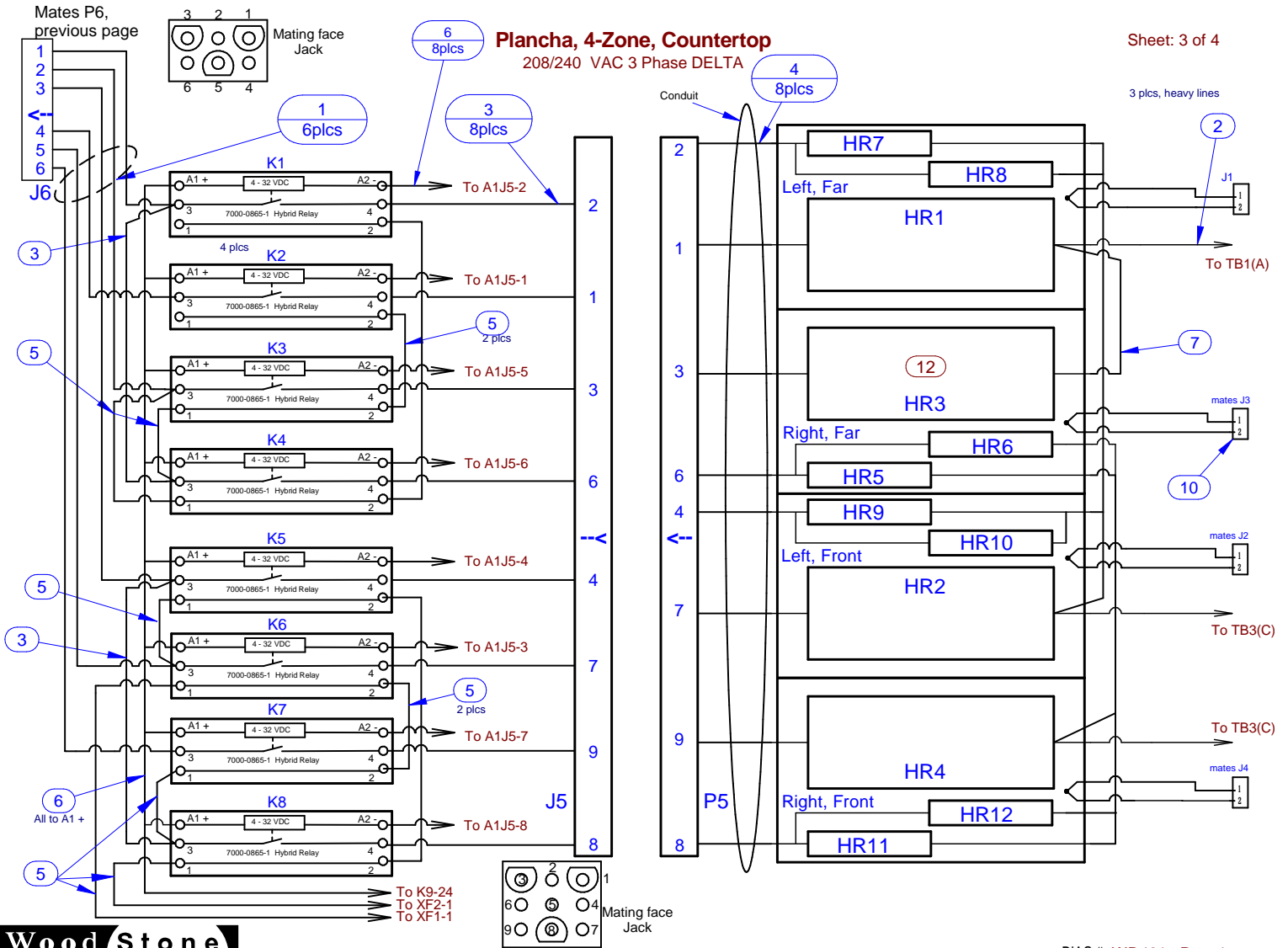


4-ZONE -CT
208/240 VAC
3 PHASE

MODELS PRODUCED BEFORE 1/1/2017

Plancha, 4-Zone, Countertop
208/240 VAC 3 Phase DELTA

Sheet: 3 of 4



Power Switching and Heating Elements

DIAG #: WD401 Rev. 1
DATE: 4/11/2019

NOTE: MUST be connected ONLY to the voltage specified on the equipment data plate.

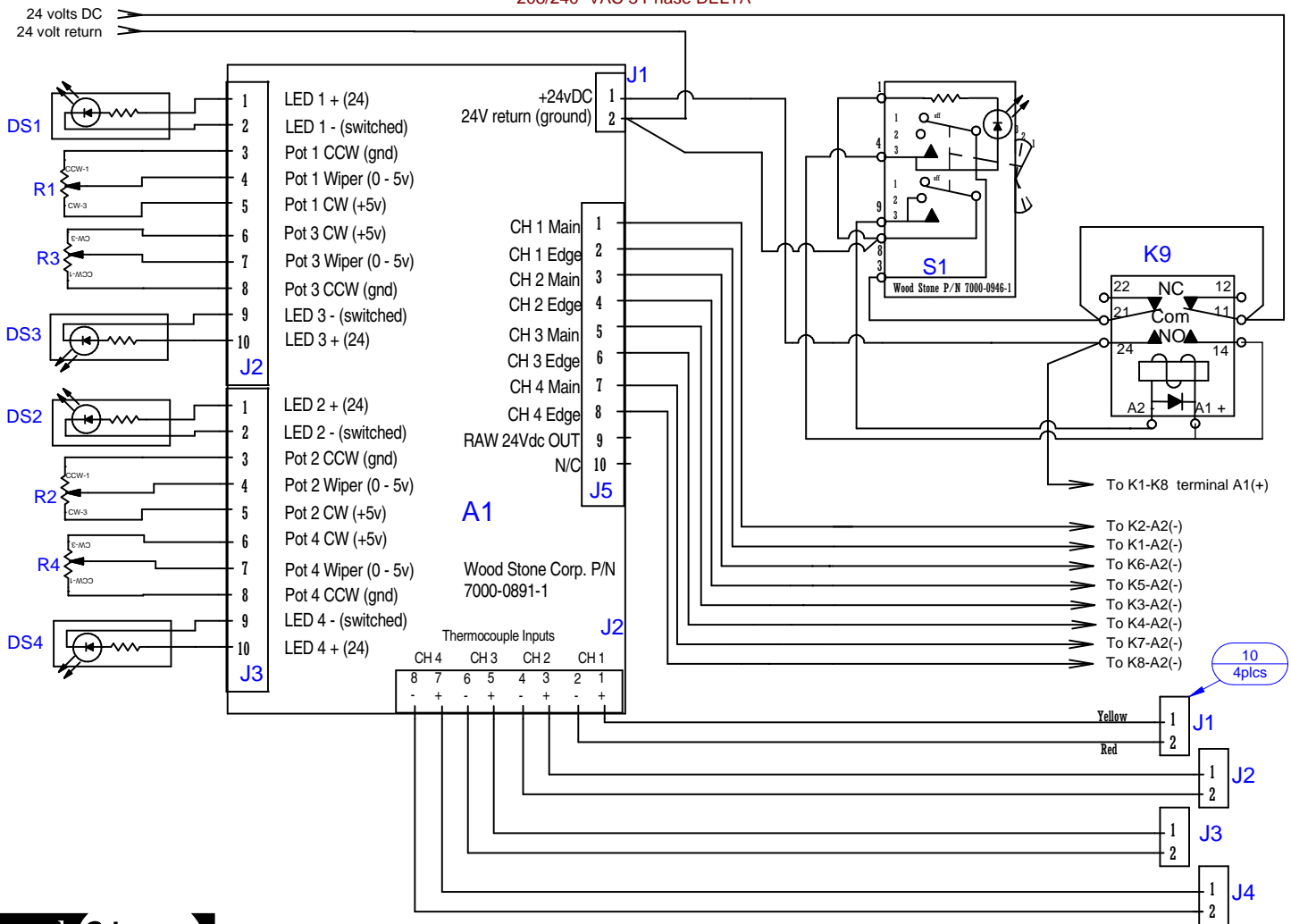


4-ZONE -CT
208/240 VAC
3 PHASE

MODELS PRODUCED BEFORE 1/1/2017

Plancha, 4-Zone, Countertop
208/240 VAC 3 Phase DELTA

Sheet: 4 of 4



Low Voltage Controls and Power Latching Circuit

DIAG #: WD401 Rev. 1
DATE: 4/11/2019

NOTE: MUST be connected ONLY to the voltage specified on the equipment data plate.

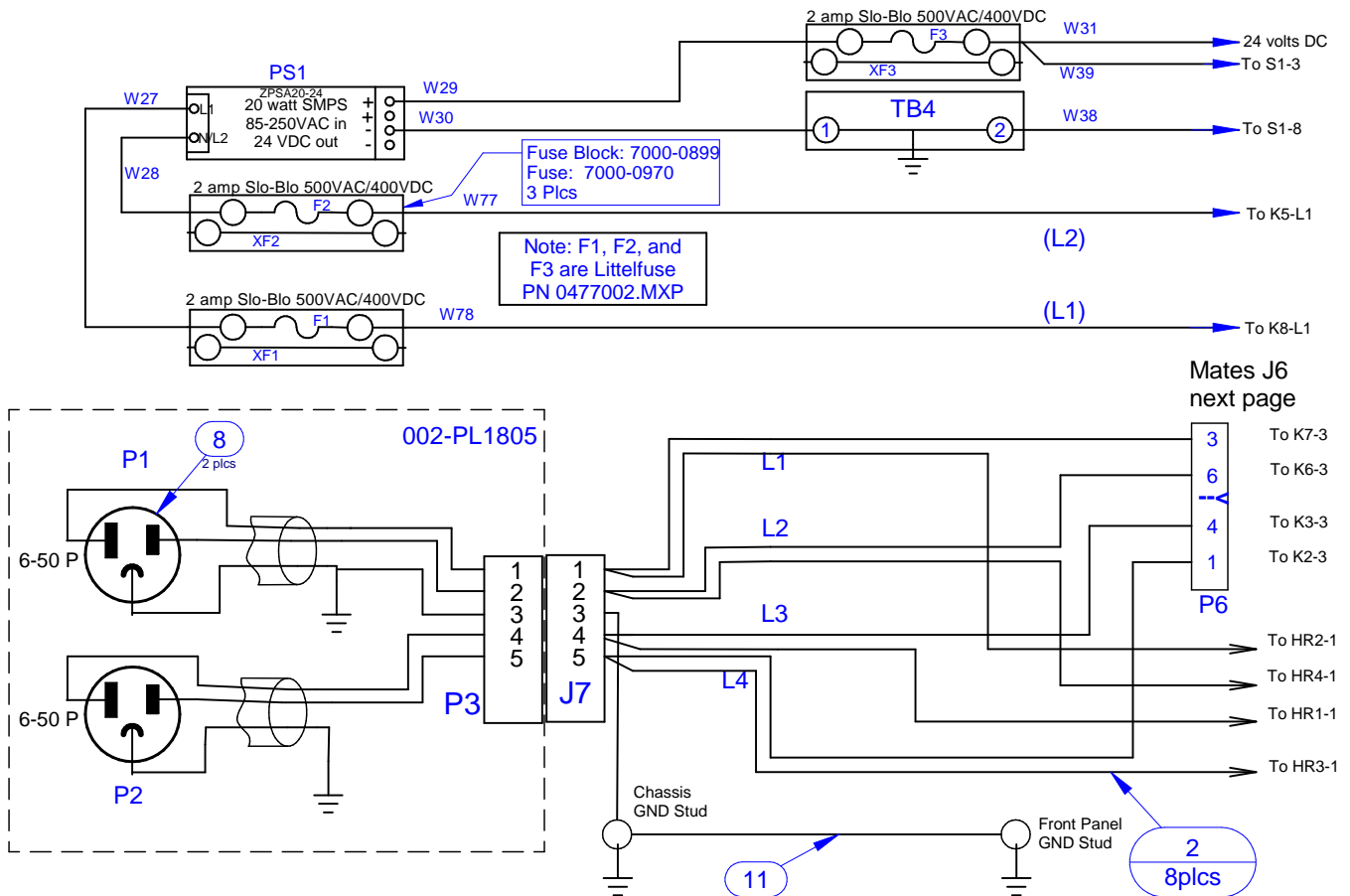


4-ZONE -CT
208/240 VAC
1 PHASE

MODELS PRODUCED AFTER 1/1/2017

Plancha, 4-Zone, Countertop
208 / 240 VAC, dual supply and disconnect

Sheet: 2 of 4



NOTE: MUST be connected ONLY to the voltage specified on the equipment data plate.



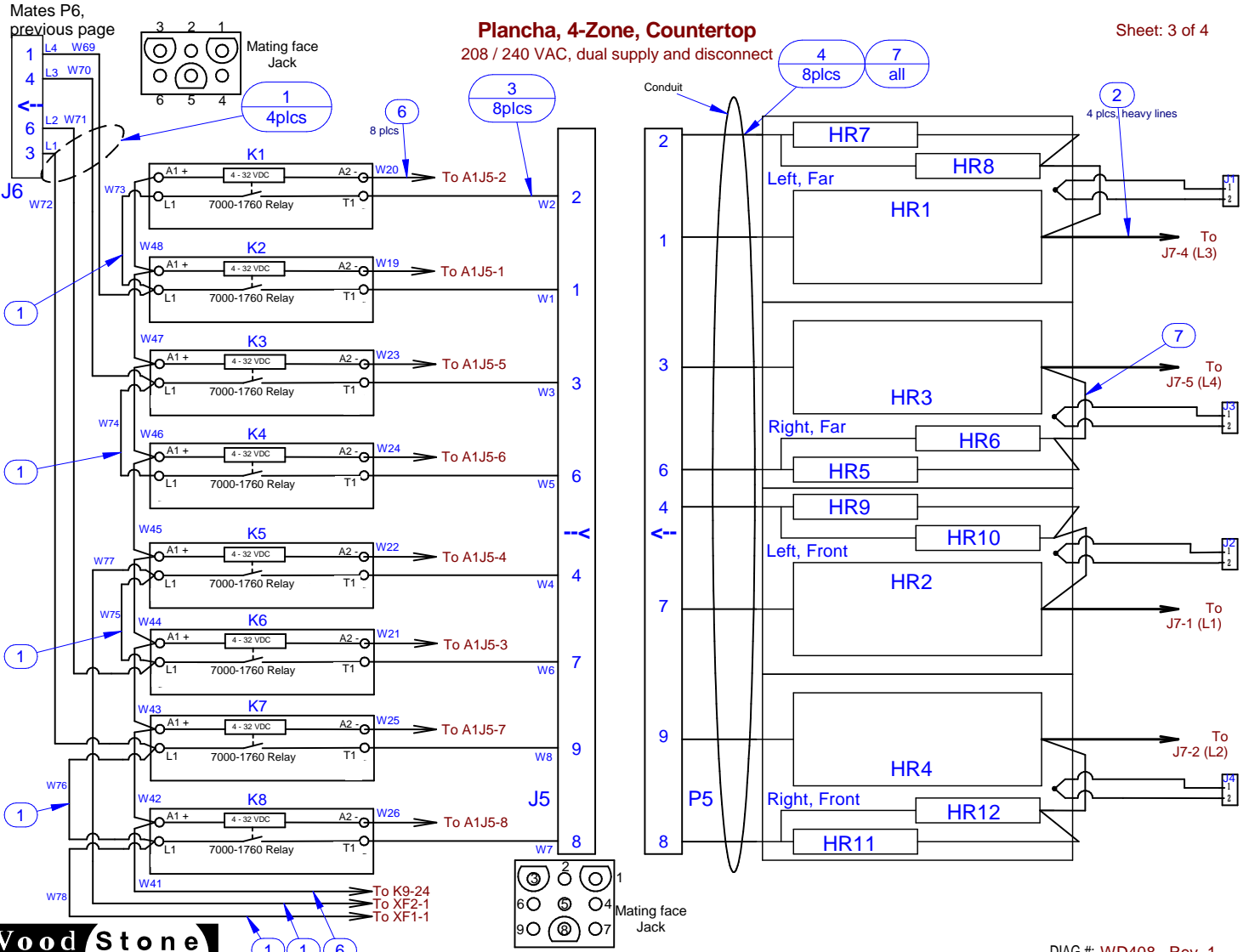
4-ZONE -CT
208/240 VAC
1 PHASE

MODELS PRODUCED AFTER 1/1/2017

Sheet: 3 of 4

Plancha, 4-Zone, Countertop

208 / 240 VAC, dual supply and disconnect

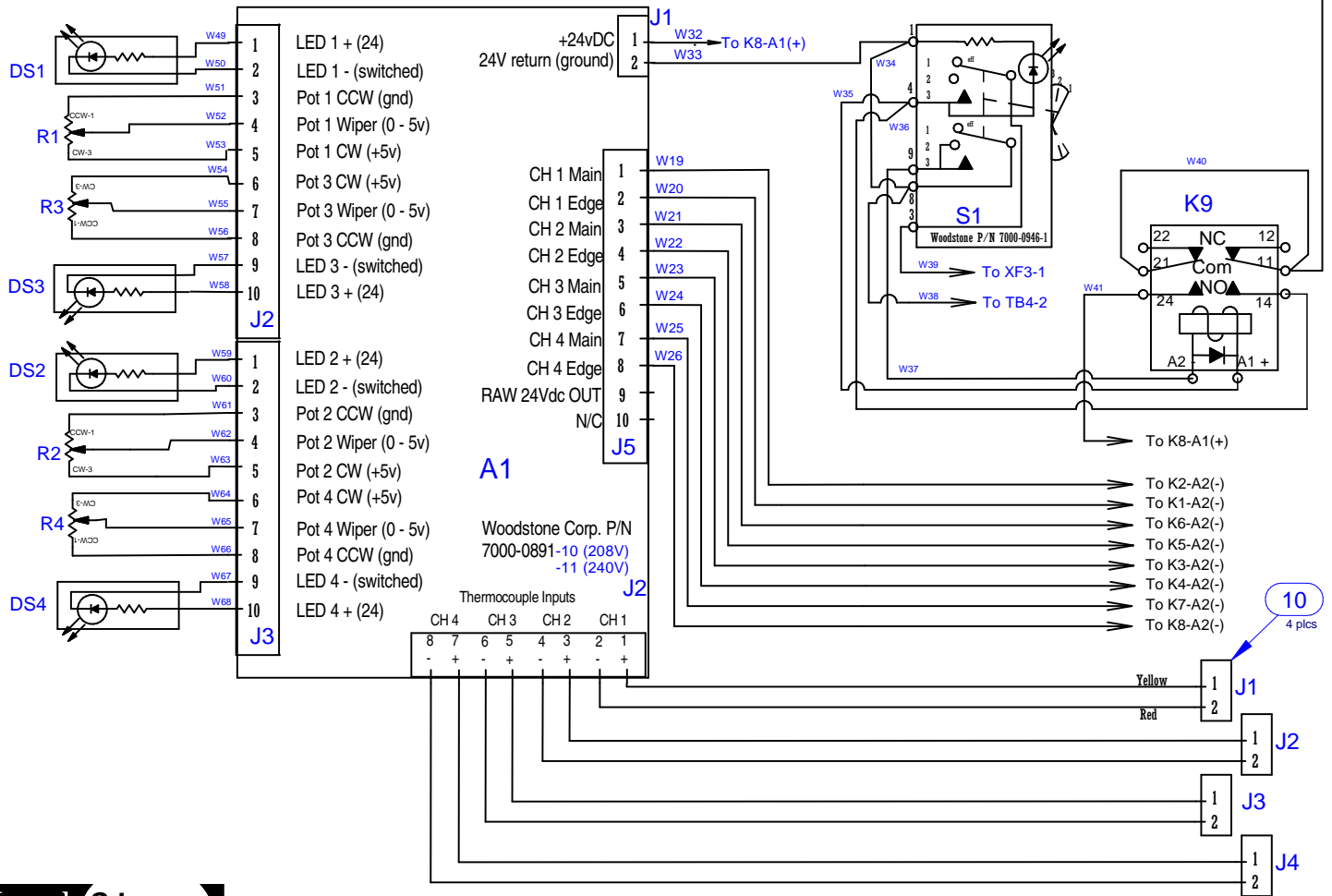


NOTE: MUST be connected ONLY to the voltage specified on the equipment data plate.



4-ZONE -CT
208/240 VAC
1 PHASE

MODELS PRODUCED AFTER 1/1/2017



NOTE: MUST be connected ONLY to the voltage specified on the equipment data plate.

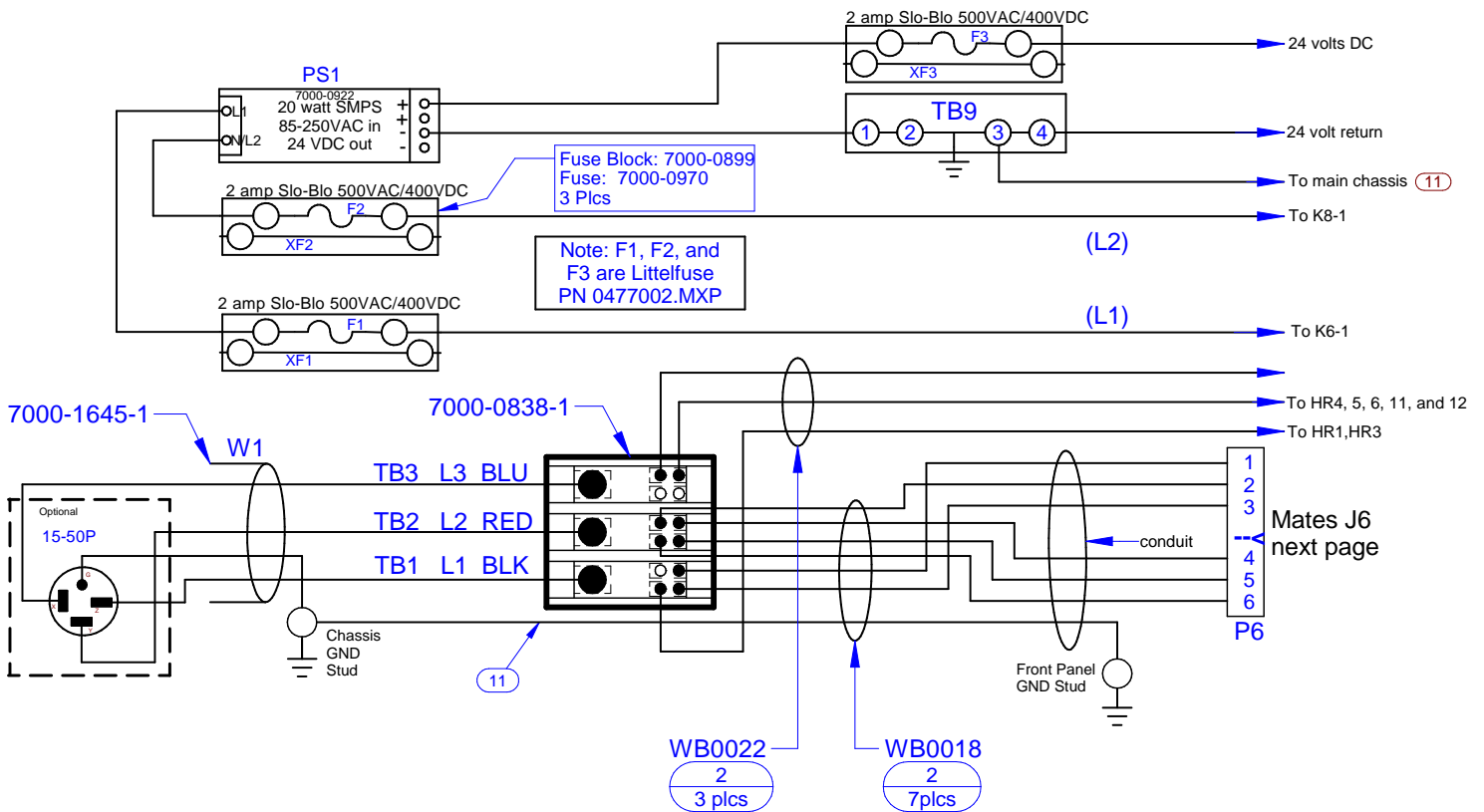


4-ZONE -CT
208/240 VAC
3 PHASE

MODELS PRODUCED AFTER 1/1/2017

Plancha, 4-Zone, Countertop
208/240 VAC 3 Phase DELTA

Sheet: 2 of 4

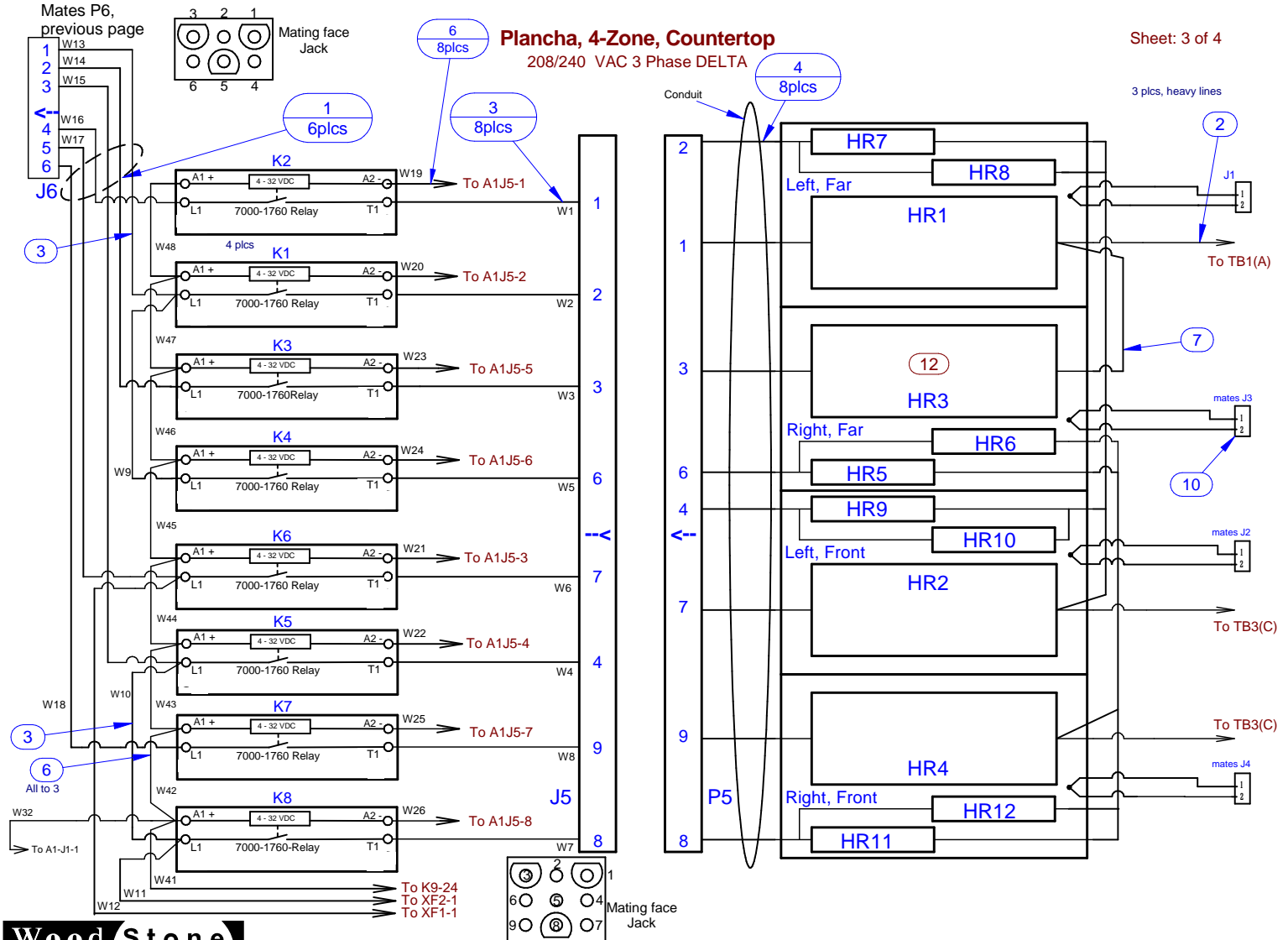


NOTE: MUST be connected ONLY to the voltage specified on the equipment data plate.



4-ZONE -CT
208/240 VAC
3 PHASE

MODELS PRODUCED AFTER 1/1/2017



Sheet: 3 of 4

Power Switching and Heating Elements

DIAG #: WD407 Rev. 1
DATE: 4/12/2019

NOTE: MUST be connected ONLY to the voltage specified on the equipment data plate.

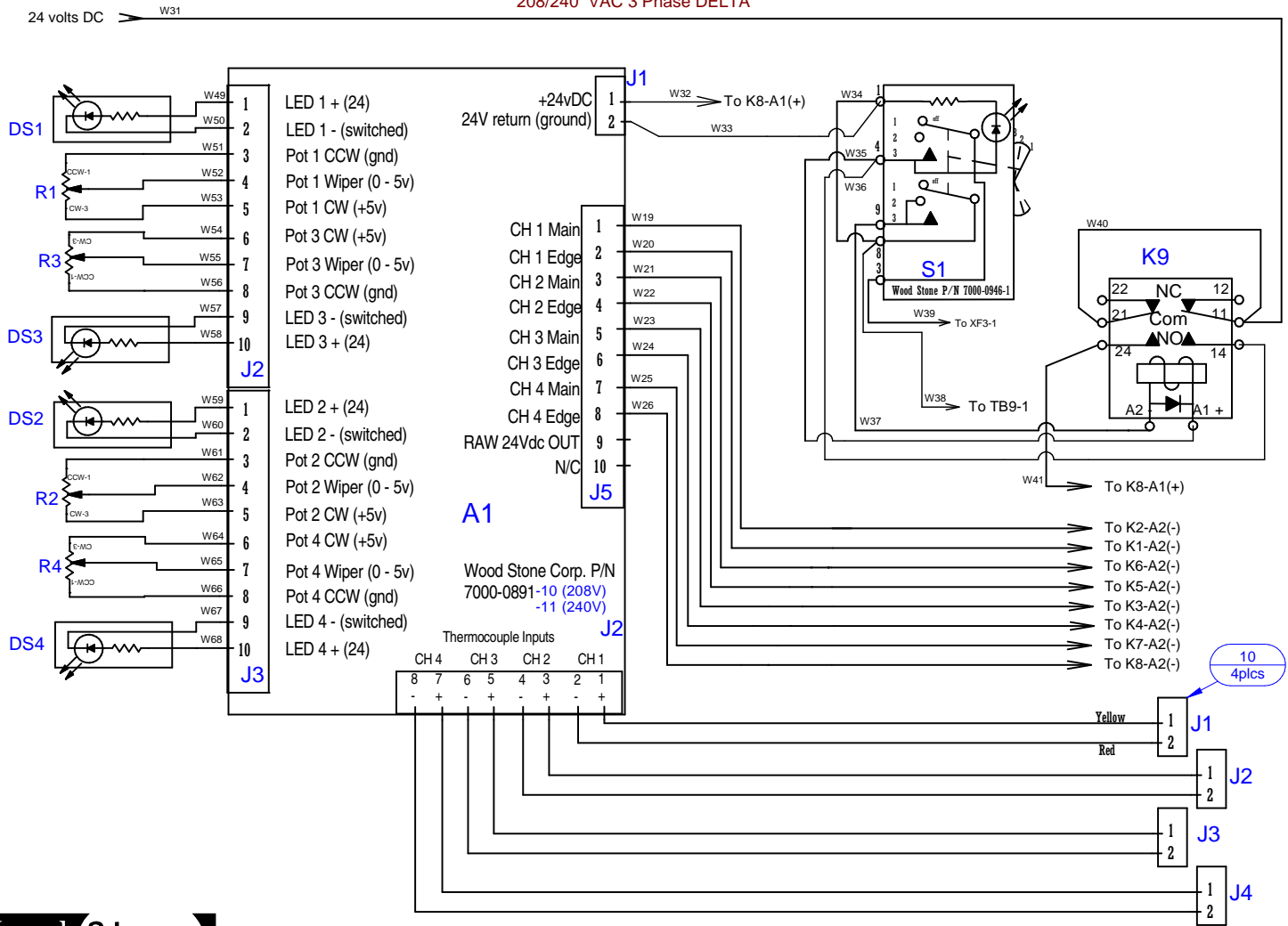


4-ZONE -CT
208/240 VAC
3 PHASE

MODELS PRODUCED AFTER 1/1/2017

Plancha, 4-Zone, Countertop
208/240 VAC 3 Phase DELTA

Sheet: 4 of 4



NOTE: MUST be connected ONLY to the voltage specified on the equipment data plate.



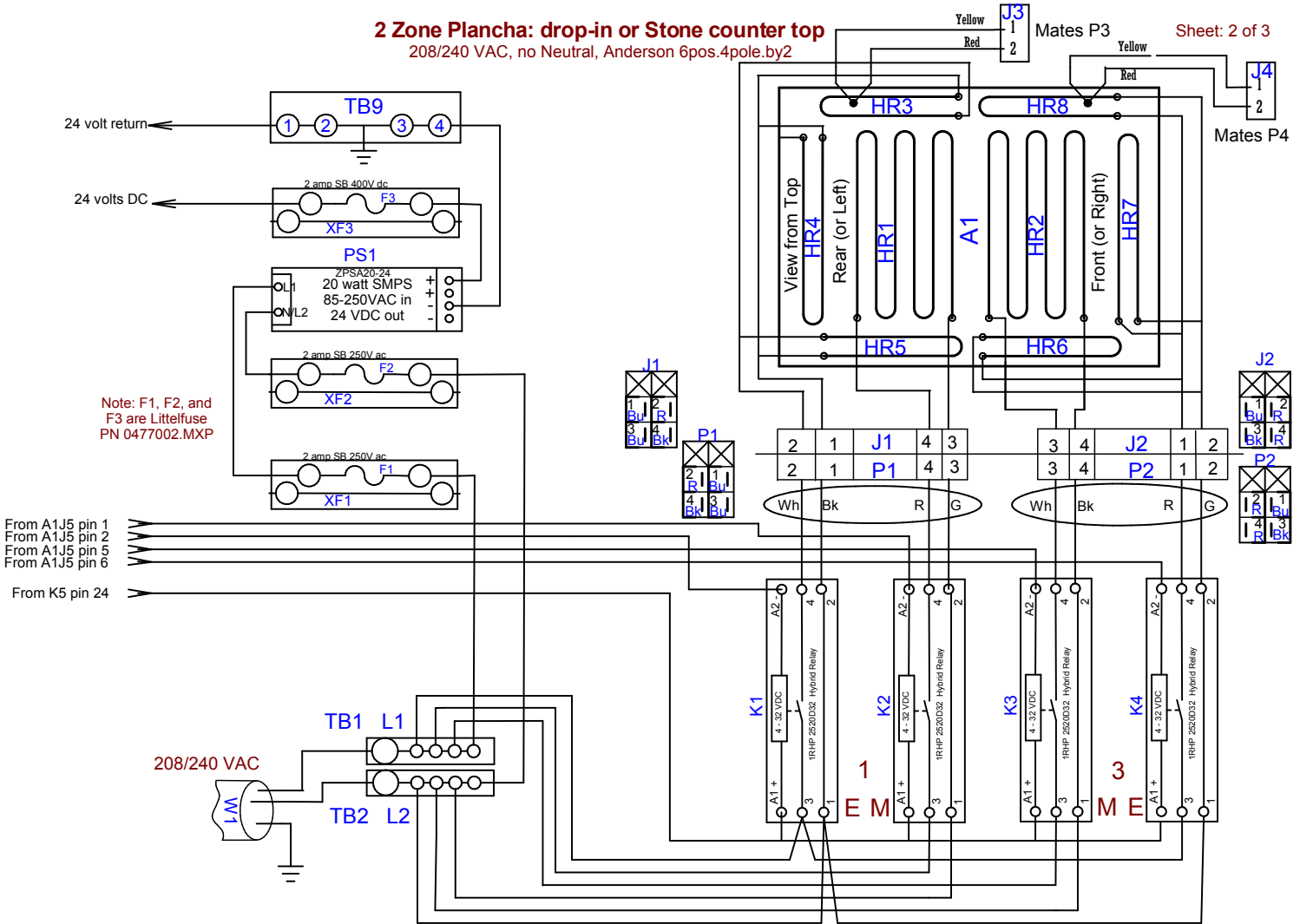
2-ZONE -DI OR -CT STONE

208/240 VAC

1 PHASE

2 Zone Plancha: drop-in or Stone counter top
208/240 VAC, no Neutral, Anderson 6pos.4pole.by2

Sheet: 2 of 3



NOTE: MUST be connected ONLY to the voltage specified on the equipment data plate.



2-ZONE -DI OR -CT STONE

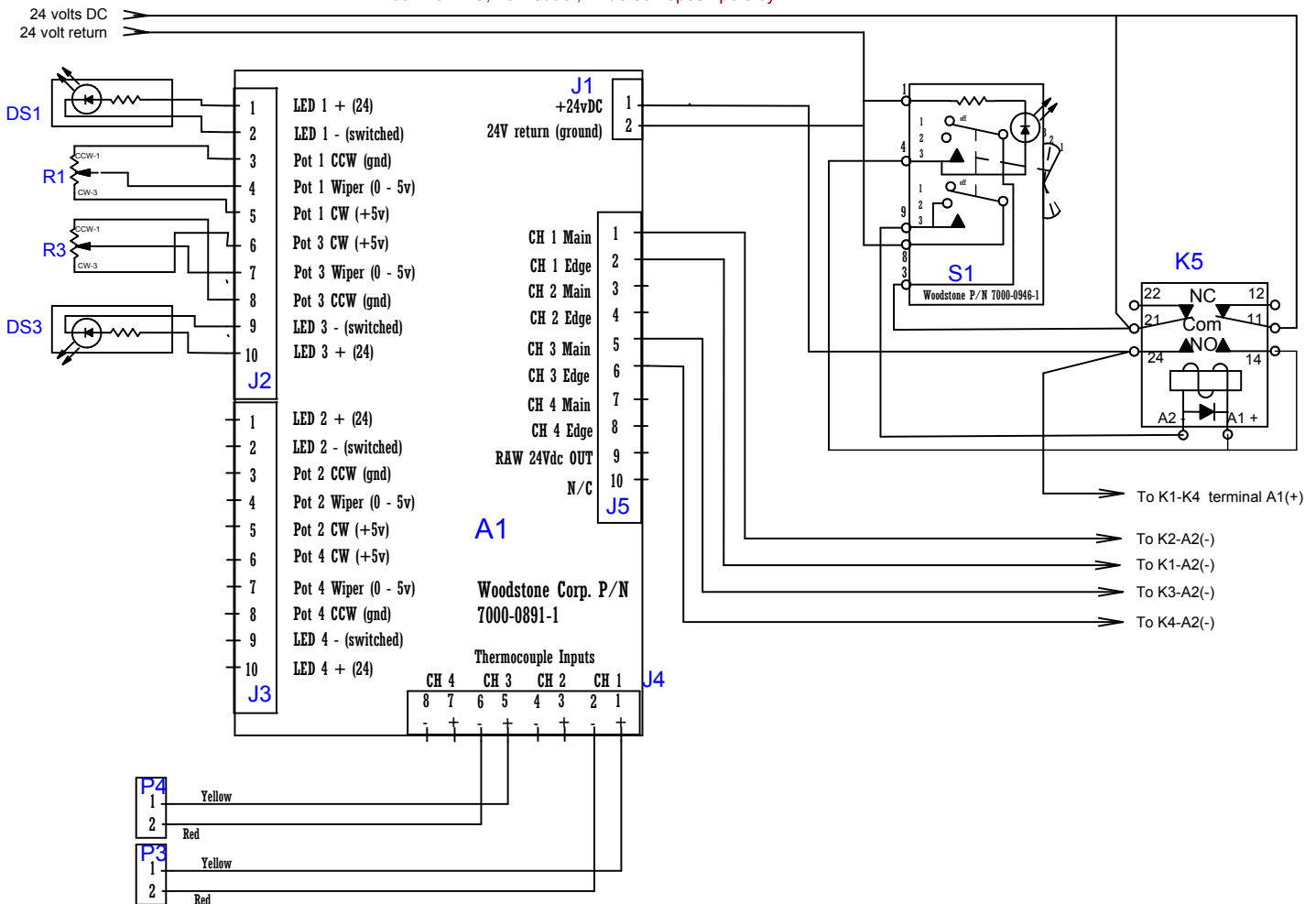
208/240 VAC

1 PHASE

2 Zone Plancha: drop-in or Stone counter top

208/240 VAC, no Neutral, Anderson 6pos.4pole.by2

Sheet: 3 of 3



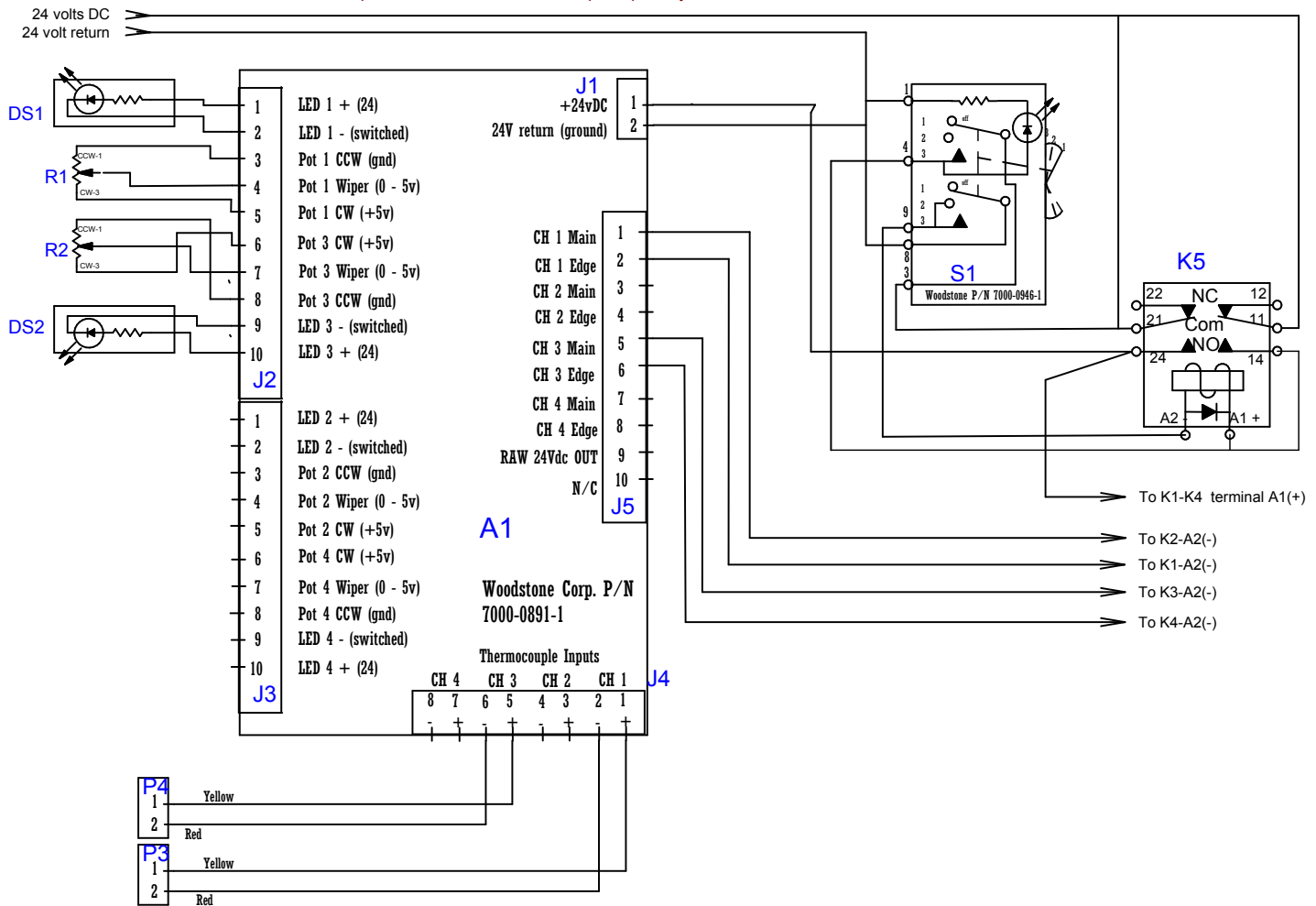
NOTE: MUST be connected ONLY to the voltage specified on the equipment data plate.



2 ZONE -DI
208 VAC
3 PHASE

Plancha Wiring, Drop In 2 Zone
208VAC 3ph, sans Neutral, Anderson 6pos.4pole.by2

Sheet: 3 of 3

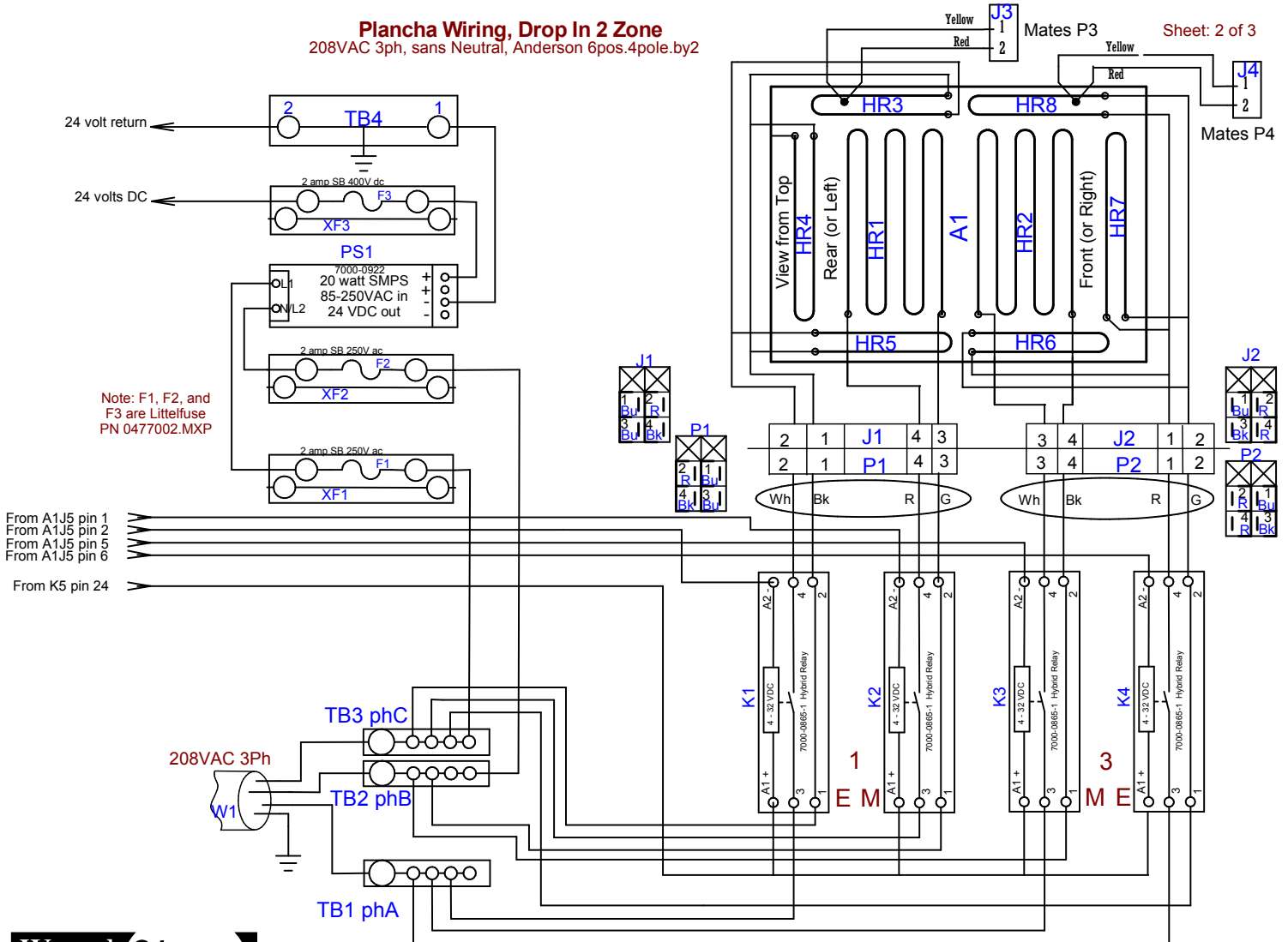


NOTE: MUST be connected ONLY to the voltage specified on the equipment data plate.



2 ZONE -DI
208 VAC
3 PHASE

Plancha Wiring, Drop In 2 Zone
208VAC 3ph, sans Neutral, Anderson 6pos.4pole.by2



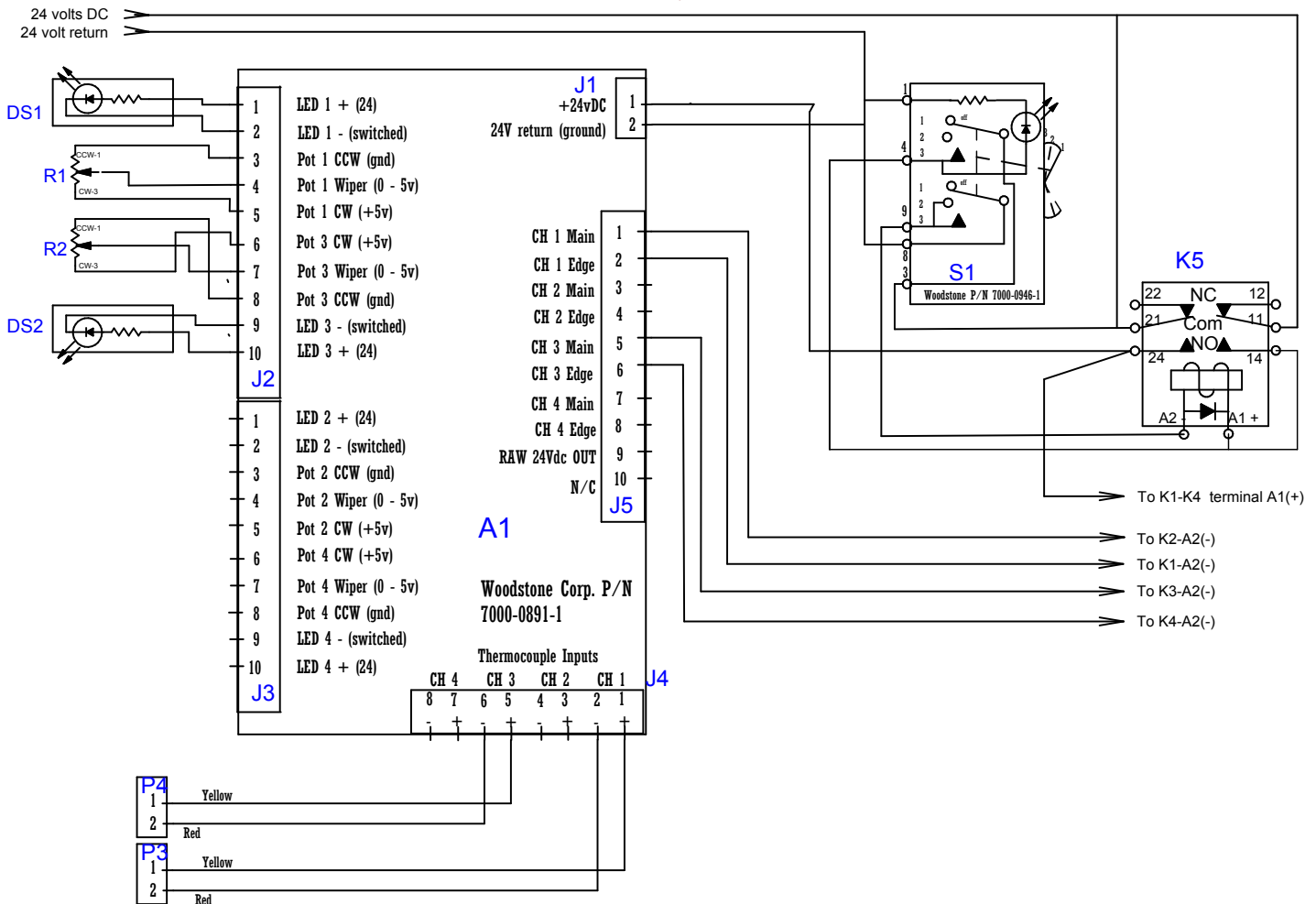
NOTE: MUST be connected ONLY to the voltage specified on the equipment data plate.



2 ZONE -DI
208 VAC
3 PHASE

Plancha Wiring, Drop In 2 Zone
208VAC 3ph, sans Neutral, Anderson 6pos.4pole.by2

Sheet: 3 of 3



NOTE: MUST be connected ONLY to the voltage specified on the equipment data plate.



ALL WARRANTY SERVICE MUST BE PRE-APPROVED BY WOOD STONE

Wood Stone warrants its equipment to the original purchaser against defects in material or manufacture for a period of one year from the original date of purchase, subject to the following exclusions and limitations.

Please contact the factory first at 1.800.988.8103 or 1.360.650.1111, seven days a week. Our normal business hours are 8am to 5pm Pacific time Monday–Friday. If calling during non-business hours, follow the recorded instructions for emergency service and a Wood Stone technician will get back to you promptly.

EXCLUSIONS

The warranties provided by Wood Stone do not apply in the following instances:

1. In the event that the equipment is improperly installed. Proper installation is the responsibility of the installer; proper installation procedures are prescribed by the Wood Stone Installation and Operation Manual.
2. In the event the equipment is improperly or inadequately maintained. Proper maintenance is the responsibility of the user; proper maintenance procedures are prescribed in the Wood Stone Installation and Operation Manual. Burner problems resulting from debris or ash in the burner well will not be covered by the warranty. Call with questions regarding maintenance frequency.
3. In the event that the failure or malfunction of the appliance or any part thereof is caused by abnormal or improper use or is otherwise not attributable to defect in material or manufacture.
4. In the event that the appliance, by whatever cause, has been materially altered from the condition in which it left the factory.
5. In the event that the rating plate has been removed, altered or obliterated.
6. On parts that would be normally worn or replaced under normal conditions.
7. Normal cracking due to expansion and contraction stress relief in the ceramic firebox.
8. In wood-fired equipment configurations, in the event that pressed log products of any type have been burned in the equipment.
9. In coal-fired oven configurations, in the event any type of coal other than anthracite coal fuel has been used.
10. Damage resulting from the use of chemical cleaning products in the oven, as well as any damage from liquids or chemicals, including water, being poured or sprayed into the oven.

If any oral statements have been made regarding this appliance, such statements do not constitute warranties and are not part of the contract of sale. This Limited Warranty constitutes the complete, final and exclusive statement with regard to warranties.

THIS LIMITED WARRANTY IS EXCLUSIVE AND IN LIEU OF ALL OTHER WARRANTIES WHETHER WRITTEN, ORAL OR IMPLIED, INCLUDING, BUT NOT LIMITED TO, ANY WARRANTY OF MERCHANTABILITY OR FITNESS FOR PARTICULAR PURPOSE OR WARRANTY AGAINST LATENT DEFECTS.

LIMITATIONS OF LIABILITY

In the event of warranty claim or otherwise, the sole obligation of Wood Stone shall be the repair and/or replacement, at the option of Wood Stone, of the appliance or component or part thereof. Such repair or replacement shall be at the expense of Wood Stone with the exception of travel over 100 miles or two hours, overtime, and holiday charges which shall be at the expense of the purchaser. Any repair or replacement under this warranty does not constitute an extension of the original warranty for any period of the appliance or for any component or part thereof. Parts to be replaced under this warranty will be repaired or replaced at the option of Wood Stone with new or functionally operative parts. The liability of Wood Stone on any claim of any kind, including claims based on warranty, expressed or implied, contract, negligence, strict liability or any other theories shall be solely and exclusively the repair or replacement of the product as stated herein, and such liability shall not include, and purchaser specifically renounces any rights to recover, special, incidental, consequential or other damages of any kind whatsoever, including, but not limited to, injuries to persons or damage to property, loss of profits or anticipated profits, or loss of use of the product.

TO SECURE WARRANTY SERVICE

If you claim a defect covered by this Limited Warranty, contact:

Wood Stone Corporation, Attn: Service Department, 1801 W. Bakerview Rd., Bellingham, WA 98226 USA
Phone 1.800.988.8103 or 1.360.650.1111