

Stand Assembly Instructions



AMP SERIES 64

Electric Deck Oven

Electric

WS-HD-6437-E-03

WS-HD-6445-E-03

WS-HD-6461-E-03

**READ ALL INSTRUCTIONS BEFORE
INSTALLING AND USING THE APPLIANCE**

WOOD  STONE

WOOD STONE CORPORATION

1801 W. Bakerview Rd.
Bellingham, WA 98226 USA

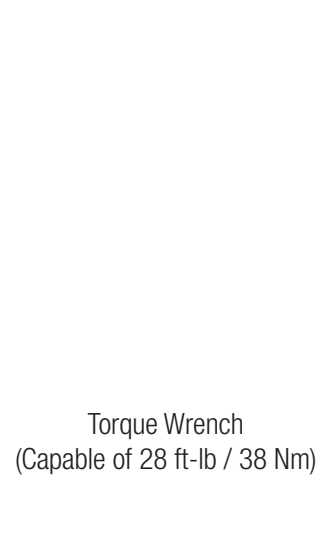
Toll Free 800.988.8103

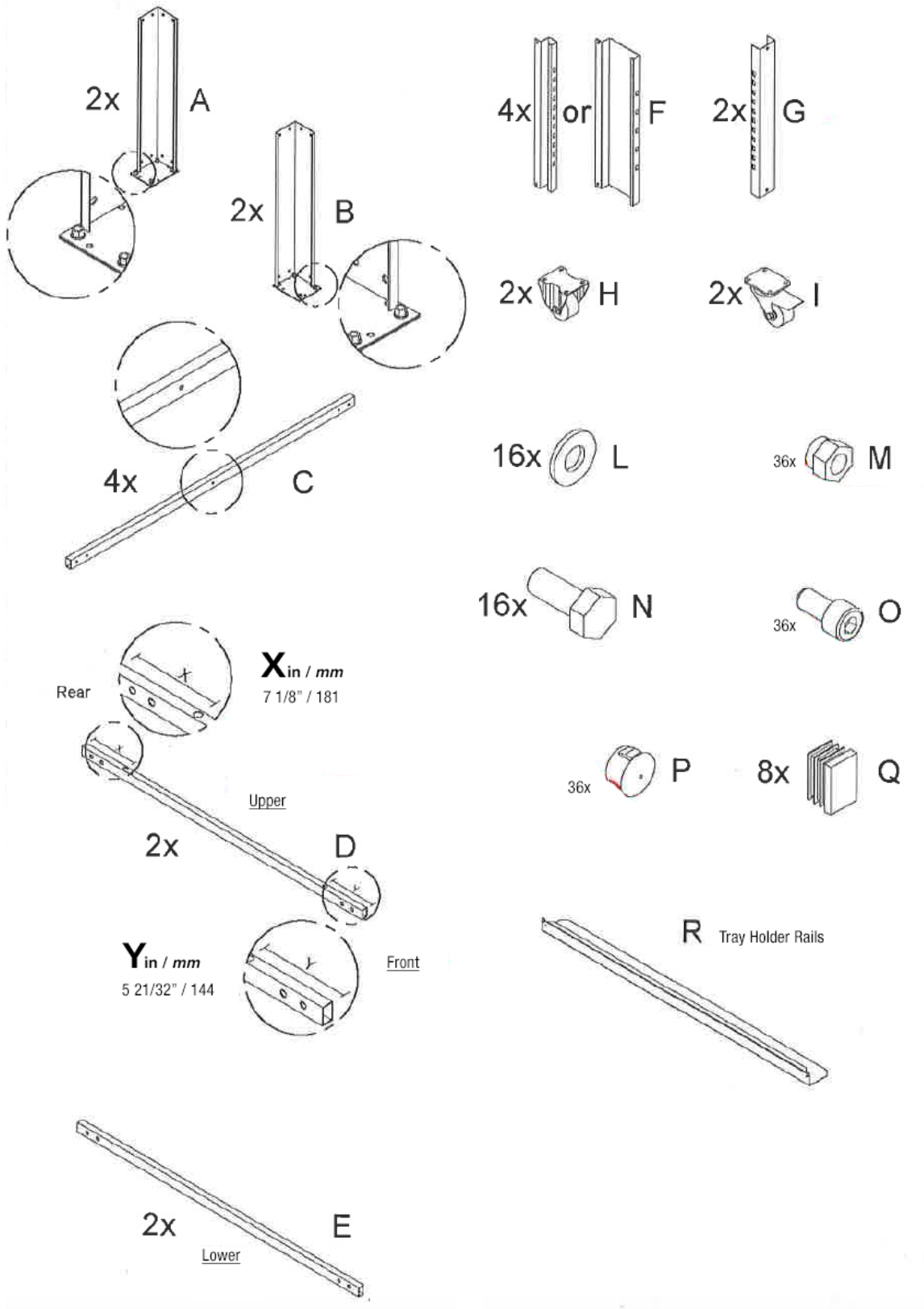
Tel 360.650.1111

Fax 360.650.1166



RECOMMENDED METRIC TOOLS

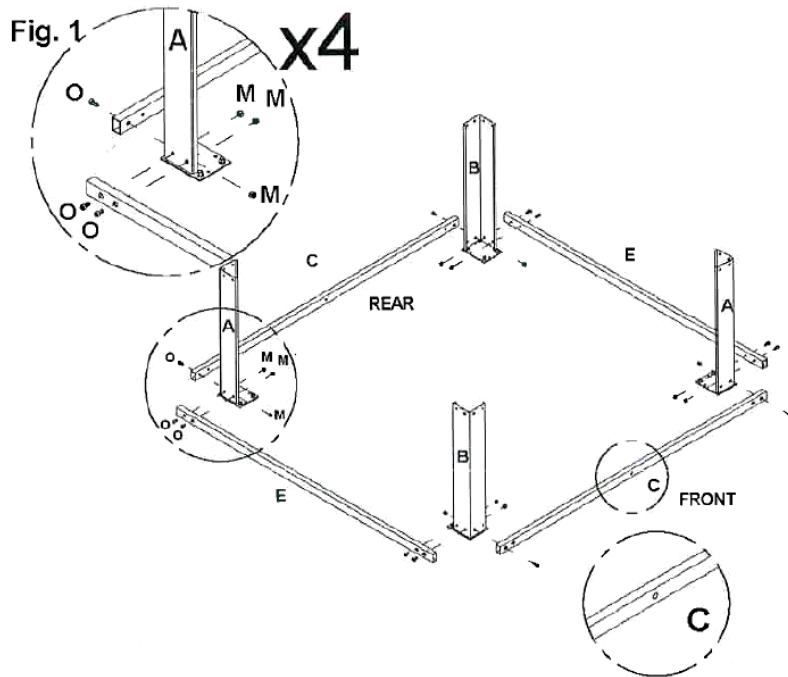




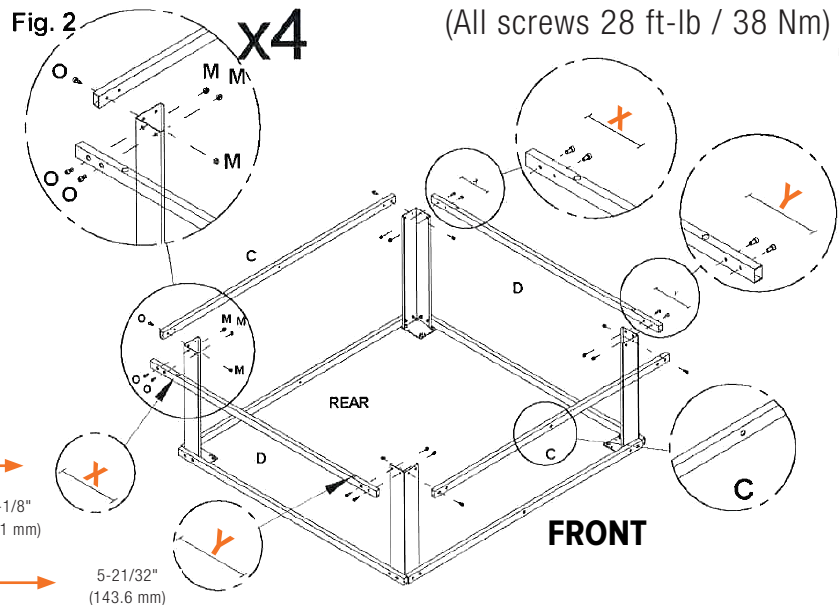


1. Place the four tubular sections as shown below.
2. Insert the legs into the square frame.
3. Align the holes in the tubular sections with those in the legs.
4. Insert all the screws of the side tubes (E)
5. Insert only the outer screws of the cross tubes (C)
6. Insert nuts respectively on the inside of the legs
7. Tighten everything hand tight, perfectly square and flat.

(All screws 28 ft-lb / 38 Nm)



8. Position the side tubular frames (D) against the legs (refer to the hole spacing diagram). **BE SURE TO ORIENT X DIMENSION TO THE REAR AND Y DIMENSION TO THE FRONT**
9. Insert the screws and nuts, then tighten all connections.
10. Position the front and rear upper tubular frames (C), insert all screws.



IMPORTANT!

7-1/8"
(181 mm)

5-21/32"
(143.6 mm)



Fig. 3 (All screws 28 ft-lb / 38 Nm) **x8**

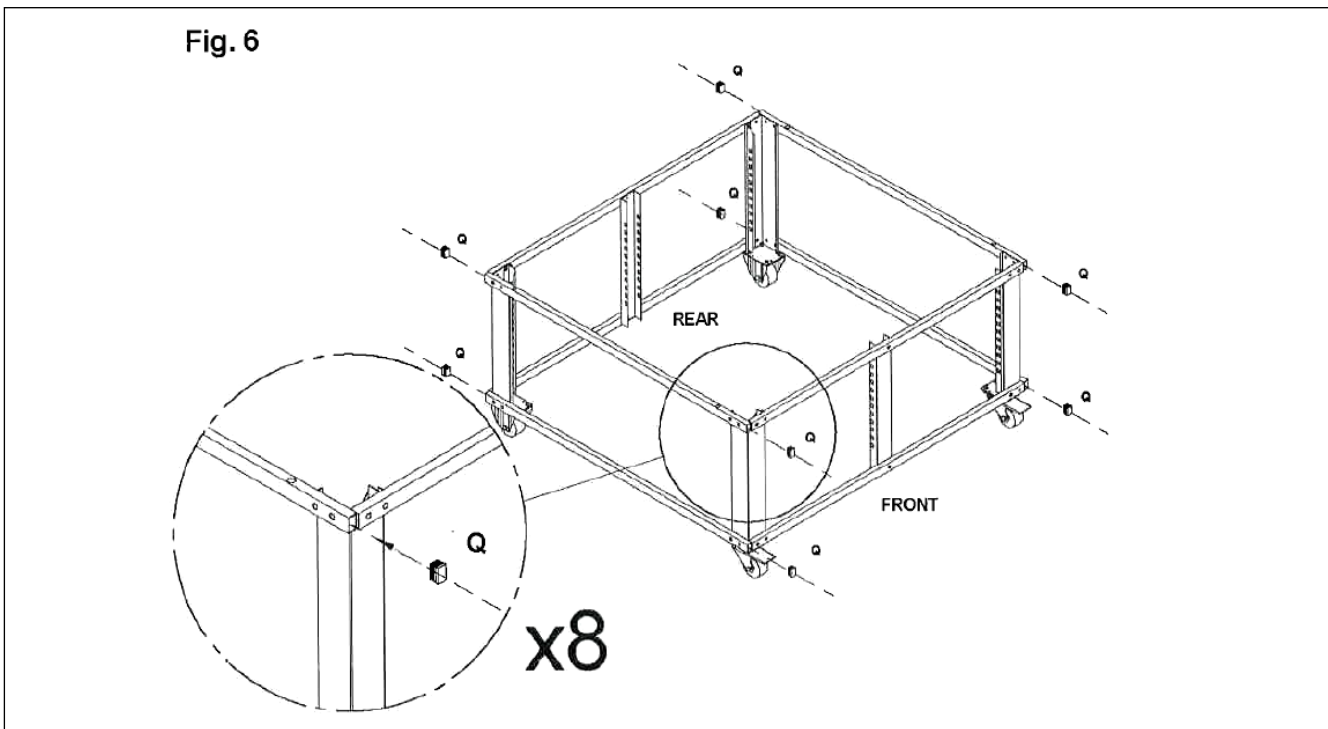
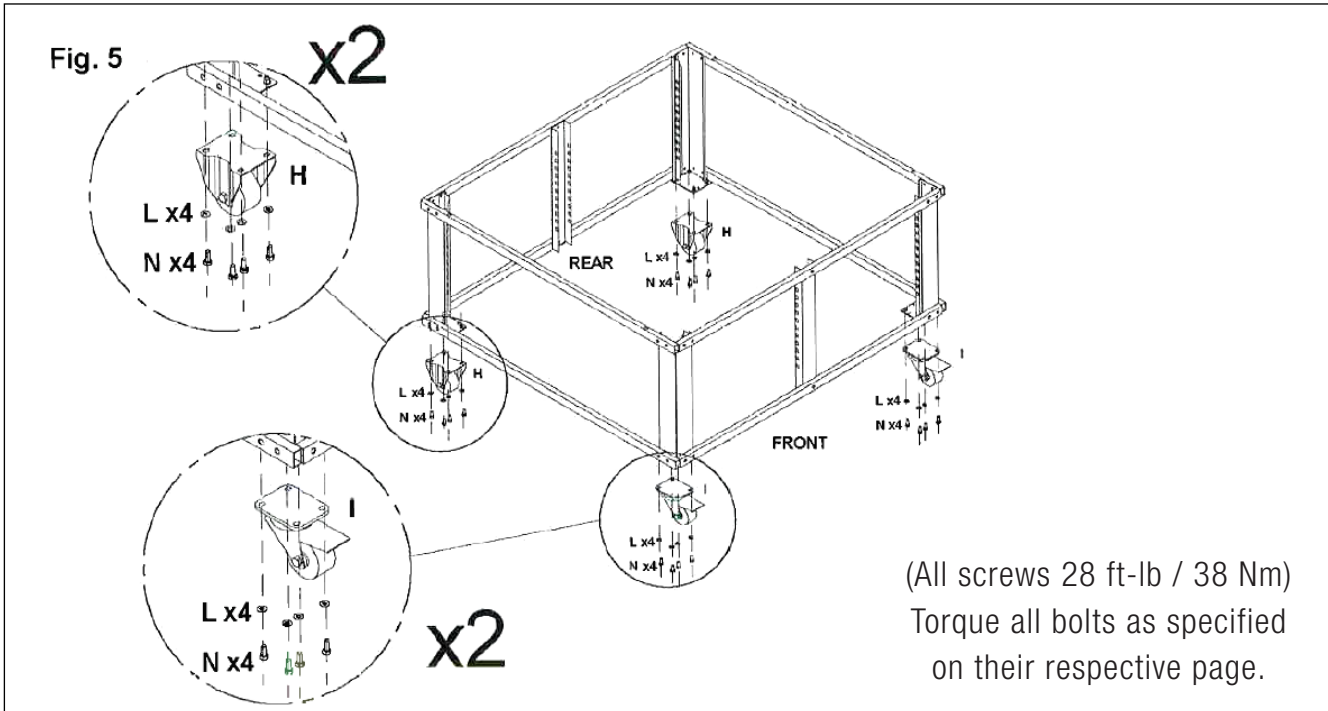
11. Position the corner tray support brackets.
12. Attach the tray support brackets, and tighten.
13. Insert the four lower screws into the base tubular frames, and tighten the tray support brackets.

Fig. 4 (All screws 28 ft-lb / 38 Nm) **x4**

14. Position the middle tray support brackets.
15. Insert the screws into the tubular frame and tighten.



12. Torque all bolts as specified on their respective page.
13. Attach the wheels using the provided screws.
- 14. IMPORTANT: Mount the fixed wheels on the rear side, and the swivel wheels on the front side.**
15. Insert the end caps to seal the open ends of the tubular frame sections.





16. Insert the appropriate plastic plugs into all the external holes of the tubular frame sections.

17. Install the tray holder rails (R)

