



WS-ERV-71 model with standard arch shown.

## ONE REV ELECTRIC ROTATING OVEN PROTOTYPE



Job Name

Model

WS-ERV-71

Item#

The Electric OneRev oven features an arched door opening 29.5 inches wide by 6.75 inches high. The oven floor has a 15.3-square-foot cooking surface. Wood Stone's new Responsive Cooking Surface features a metal core with a proprietary ceramic coating. The ERV oven has set and forget controls that allow you to choose from 90 seconds to 6 minutes one rotation cooking, with individual controls for top and bottom heat. It comes standard with a stainless-steel debris management mantel, and the double-layered insulated walls require only a 1-inch side clearance to combustibles. The oven arrives completely assembled, ready to install, and is made in the USA by employee-owners.

## FUEL CONFIGURATIONS

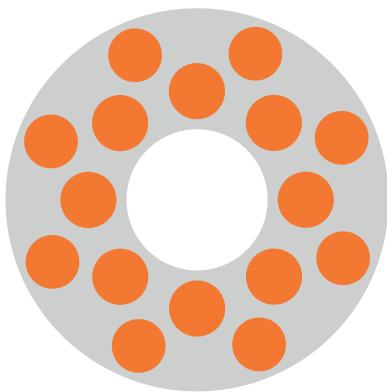
### ELECTRIC ONLY

## HEARTH CAPACITY

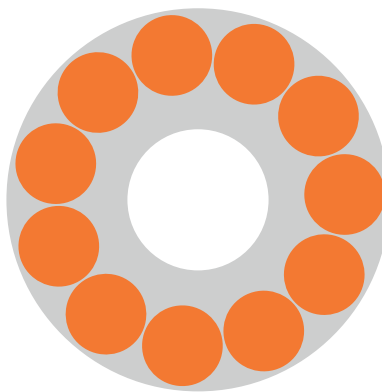
8" pizzas: 16

12" pizzas: 11

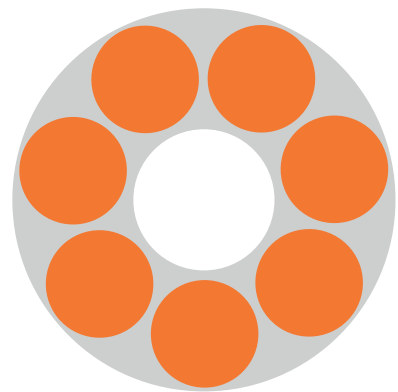
16" pizzas: 7



16 - 8"



11 - 12"



7 - 16"

*Assuming 3.5-minute cook times, the approximate maximum hourly production capacity can be calculated by multiplying the above numbers by 17. Cook times will also vary depending on "style" of pizza.*

t. 360.650.1111  
tf. 800.988.8103  
f. 360.650.1166

Wood Stone Corporation  
1801 W. Bakerview Rd.  
Bellingham, WA 98226 USA  
[info@woodstone-corp.com](mailto:info@woodstone-corp.com)  
[woodstone-corp.com](http://woodstone-corp.com)

REVISED: SPRING 2025

An ongoing program of product improvement may require us to change specifications without notice.

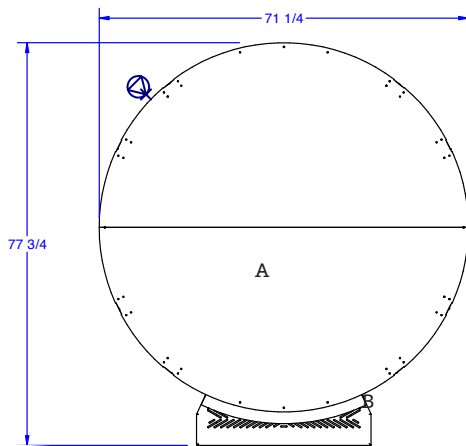
WOOD  STONE



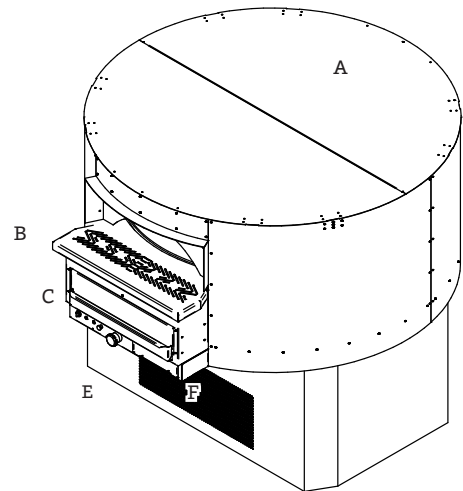
# ONE REV

ELECTRIC ROTATING OVEN • WS-ERV-71

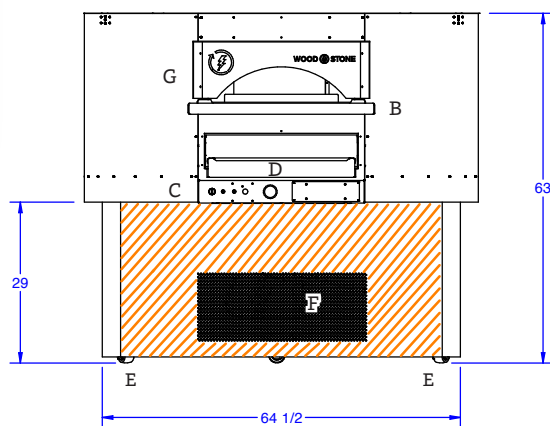
PLAN VIEW



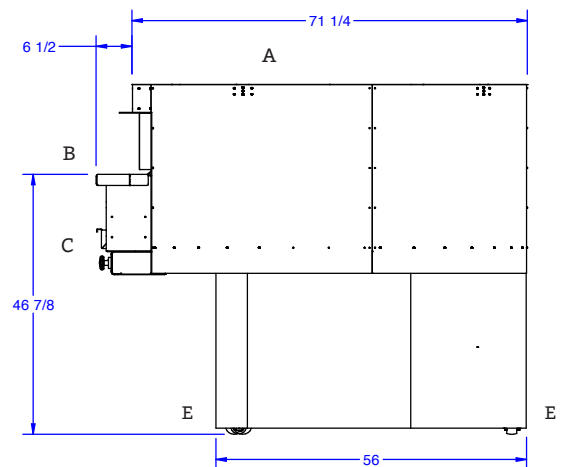
THREE-QUARTER VIEW



FRONT VIEW



SIDE VIEW



A	Flue Collar
B	Mantel
C	Control Panel
D	Function Switch
E	Forklift Here
	Electrical Connection
F	Service Panel
G	Arch

Must Be Left Removable for Service

**AIR INTAKE:**  
Do Not Facade or Cover Over

## UTILITIES SPECIFICATIONS

ELECTRICAL  
208 VAC 3P 30 kW

## VENTING INFORMATION

Vented using a suitable chimney or placed under an exhaust hood in accordance with applicable local and national codes.

**Ship Weight: 1,600 lbs / 726 kg**

REVISED: SPRING 2025

An ongoing program of product improvement may require us to change specifications without notice.

WOOD STONE

t. 360.650.1111  
tf. 800.988.8103  
f. 360.650.1166

Wood Stone Corporation  
1801 W. Bakerview Rd.  
Bellingham, WA 98226 USA  
[info@woodstone-corp.com](mailto:info@woodstone-corp.com)  
[woodstone-corp.com](http://woodstone-corp.com)