



Job Name	
Model	WS-
Item#	

Job Name	
Model	WS-
Item#	



MOUNTAIN SERIES - STORAGE BOXES

Wood Stone's wood storage box is constructed of stainless steel or, as an option, a broad selection of powder coat finishes (over mild steel) are available. It slides easily into the oven stand. The rear panel of the box is removable to allow access to the under-side of the oven. This box is intended for use only with -W, RFG, and RFG-W models. It cannot be used with IR equipped models. For IR equipped models see our Facade Extensions page.

Oven Model	Height	Width	Depth
MS-4 (wood)	21 7/8"	27 1/2"	28"
MS-5 (wood)	21 7/8"	29"	28"
MS-6 (wood)	21 7/8"	35"	32"
MS-7 (wood)	21 7/8"	41"	28"



MS-4 STORAGE BOX

(#0-4-BOX-W-SS) - Stainless Steel

(#0-4-BOX-W-PC) - Powder Coat



MS-5 STORAGE BOX

(#0-5-BOX-W-SS) - Stainless Steel

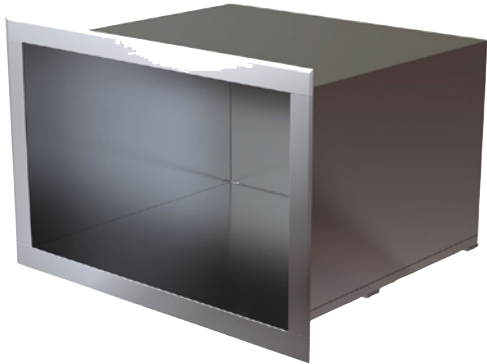
(#0-5-BOX-W-PC) - Powder Coat

Job Name	
Model	WS-
Item#	

Job Name	
Model	WS-
Item#	

MOUNTAIN SERIES - STORAGE BOXES

Wood Stone's storage box is constructed of stainless steel or, as an option, a broad selection of powder coat finishes (over mild steel) are available. It slides easily into the oven stand. The rear panel of the box is removable to allow access to the under-side of the oven.



MS-6 STORAGE BOX

- (#0-6-BOX-W-SS) - Stainless Steel
- (#0-6-BOX-W-PC) - Powder Coat



MS-7 STORAGE BOX

- (#0-7-BOX-W-SS) - Stainless Steel
- (#0-7-BOX-W-PC) - Powder Coat